

# *Classifying urban form at a national scale*

*The case of Great Britain*

Martin Fleischmann

Dani Arribas-Bel

[[@martinfleis](#)]

[[@darribas](#)]



**The  
Alan Turing  
Institute**



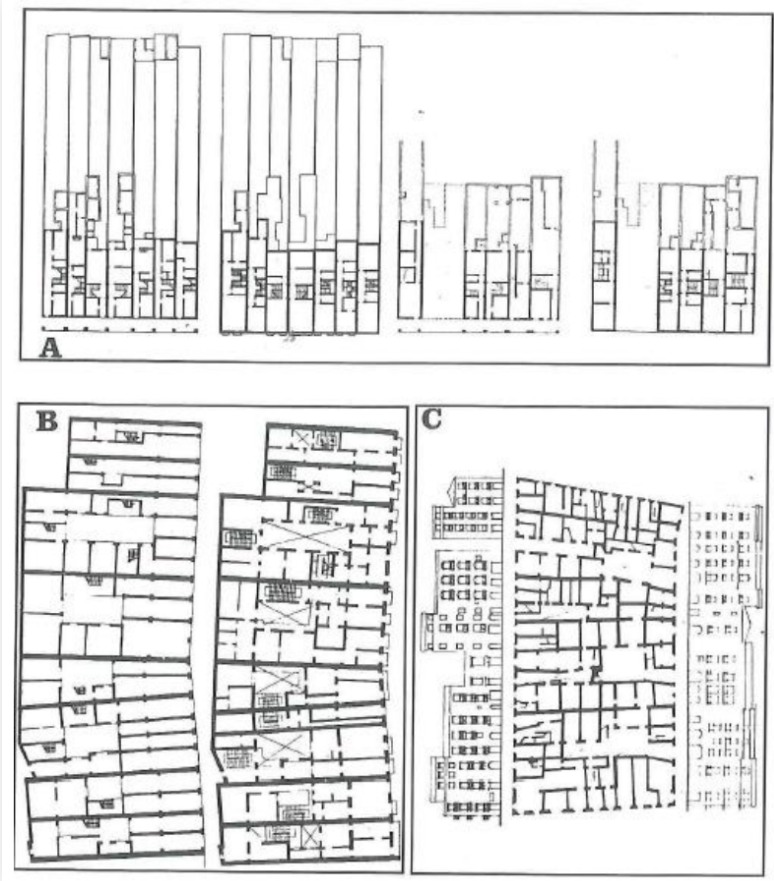
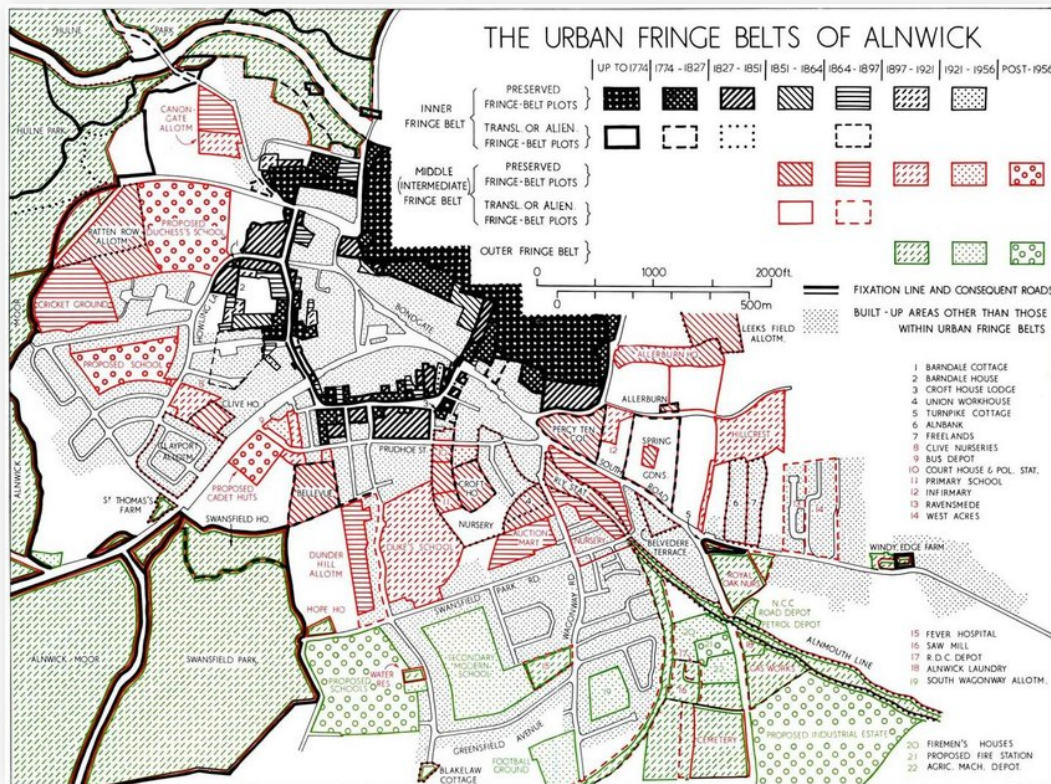
Geographic  
Data Science  
Lab

# Scaling morphological studies

... can be daunting

# Traditional schools

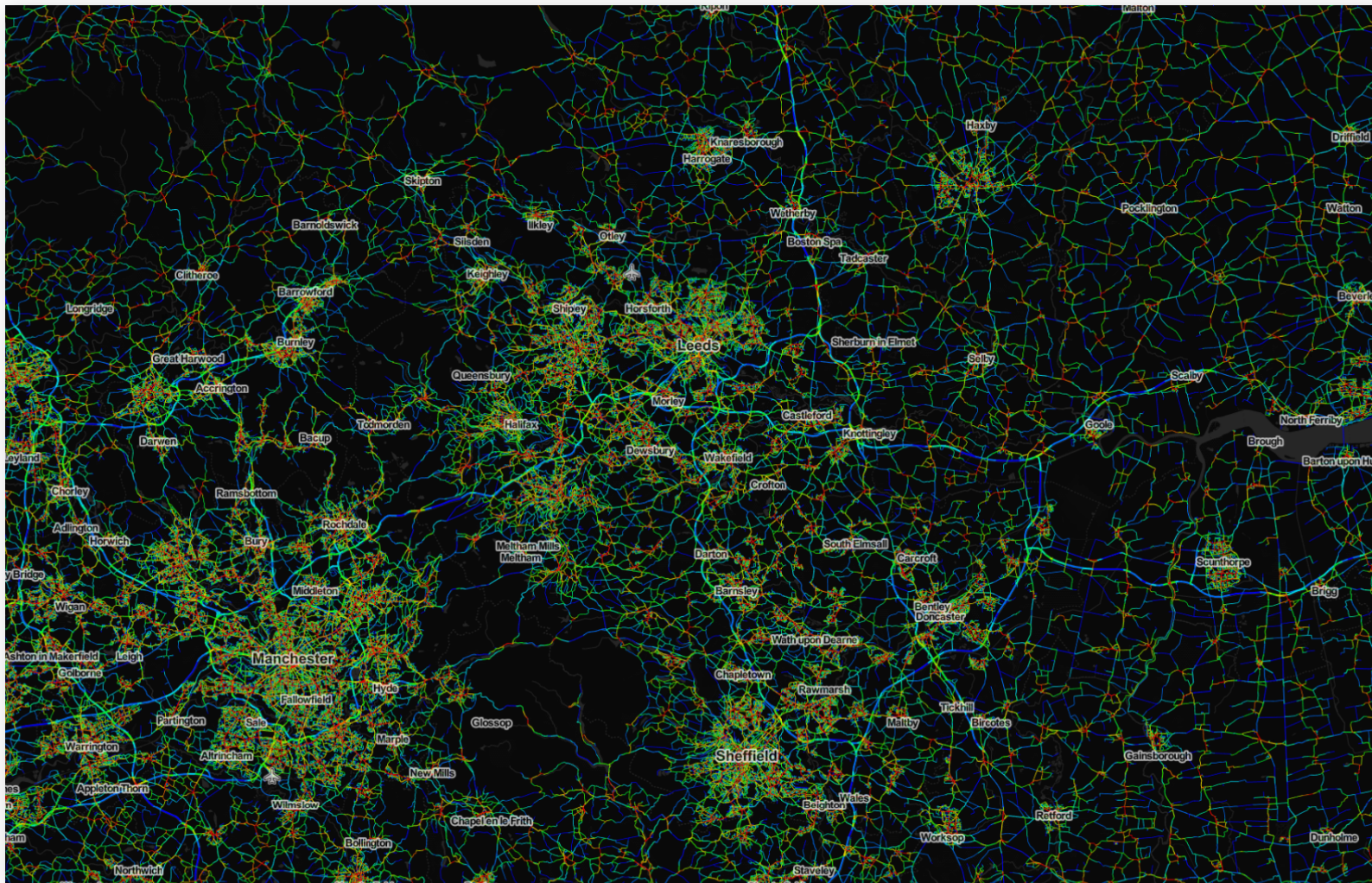
... (almost) cannot scale





# Space Syntax

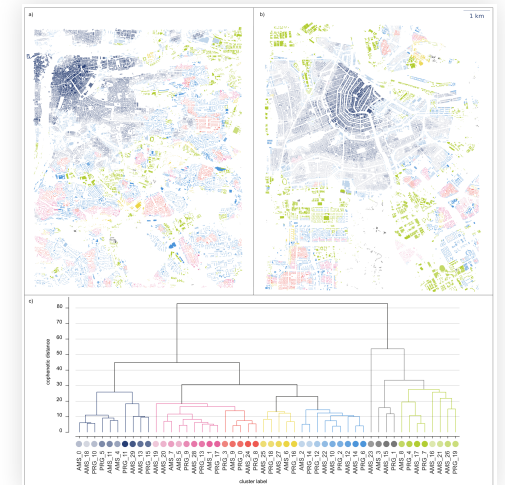
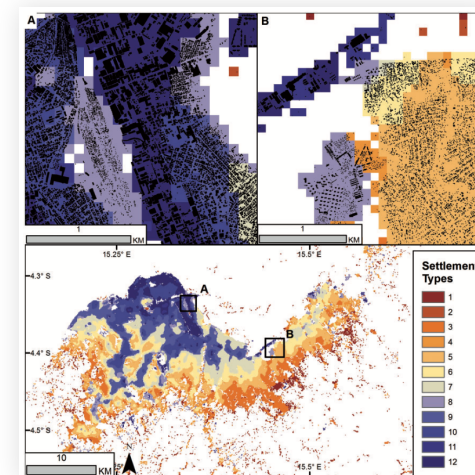
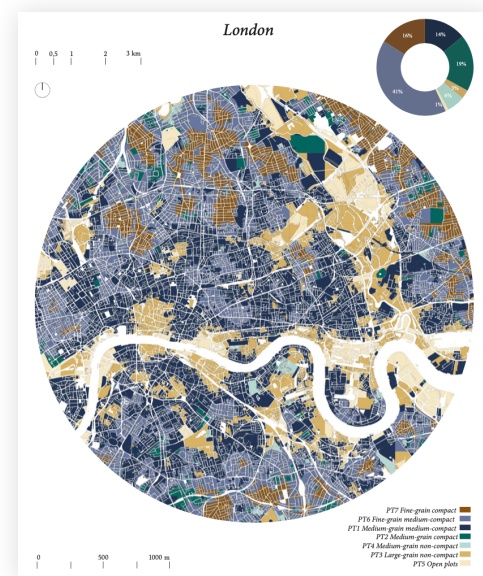
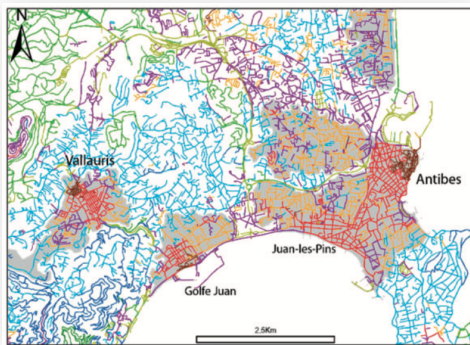
... can scale but offers limited insights



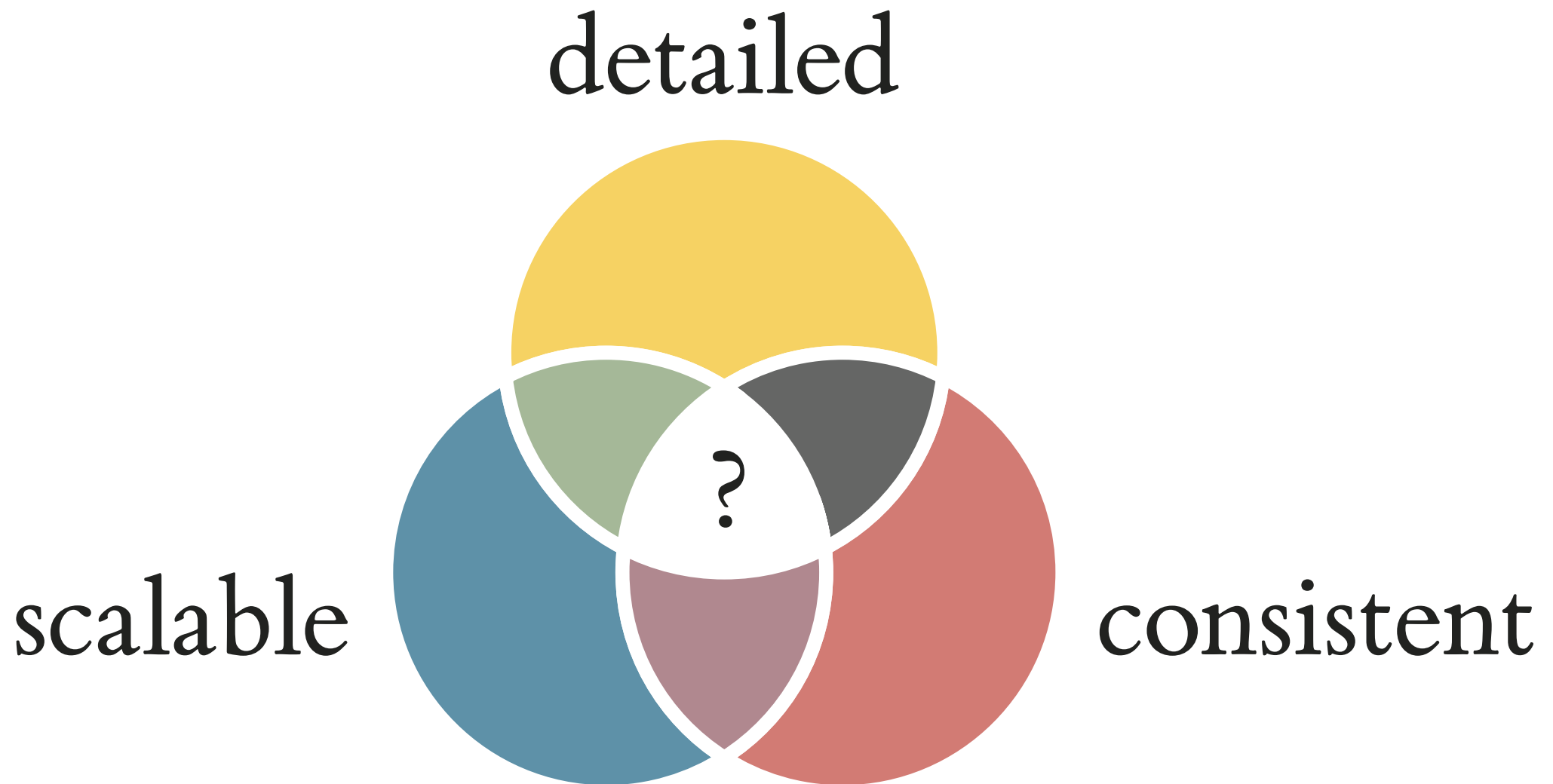


# Morphometric approaches

... are trying to find a way



# Opportunities



# Spatial Signatures



*A characterisation of space based on form and function  
designed to understand urban environments*

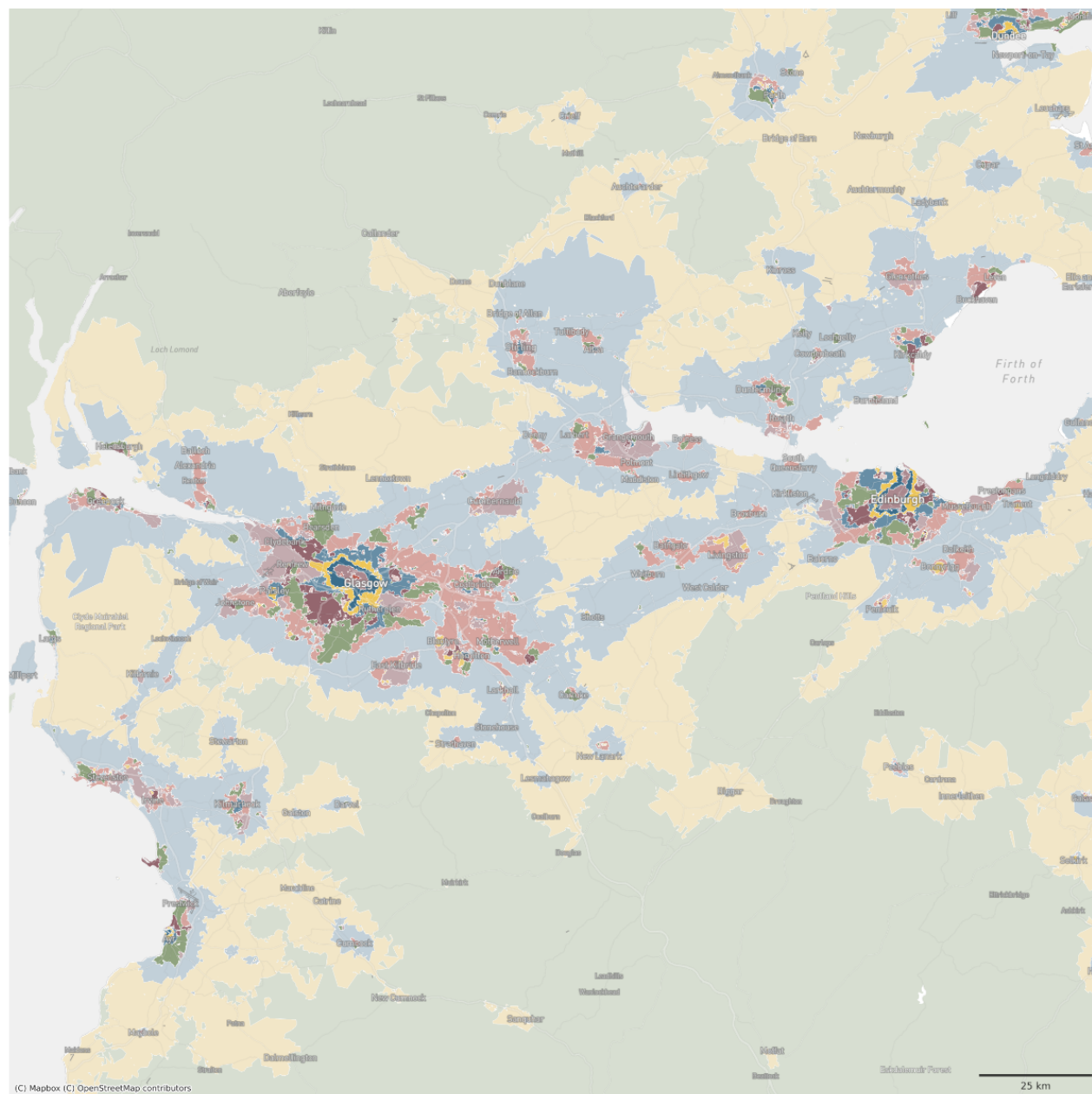
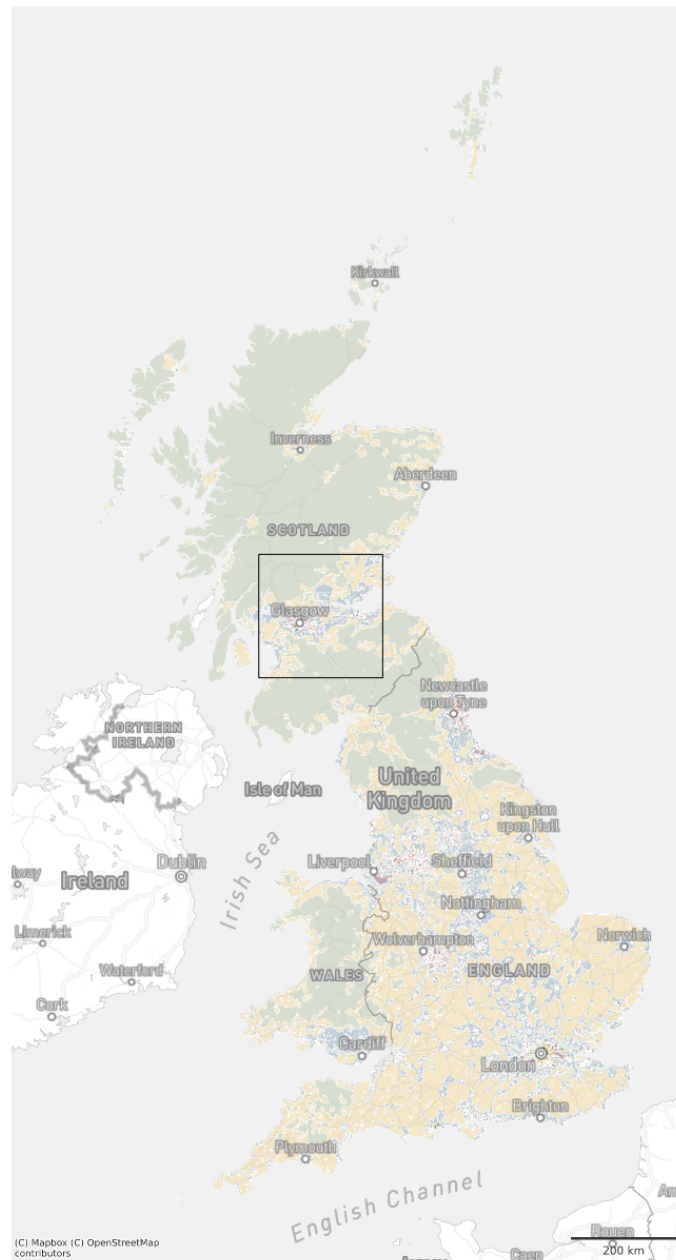
*A characterisation of space based on form and function  
designed to understand urban environments*

*A characterisation of space based on form and function  
designed to understand urban environments*



*A characterisation of space based on form and function  
designed to understand urban environments*

# Spatial Signatures



# Form

One of the two components of Spatial Signatures

Qualitative, quant. case studies, morphometrics,  
remotely sensed



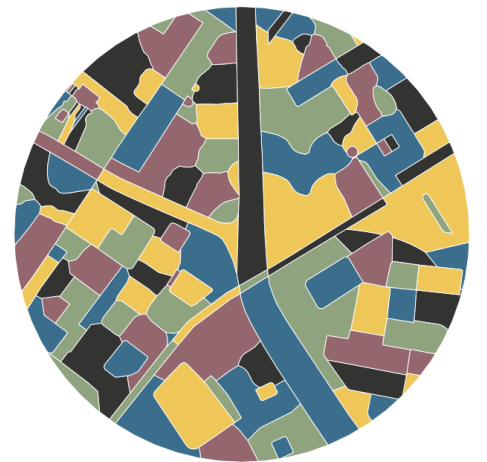
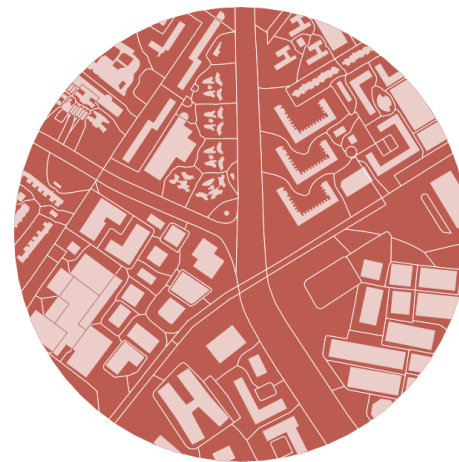
# Ordnance Survey Open Data

building footprints + street network  
... can be a bit limited.



Spatial Unit

# Enclosed tessellation





How can we describe it...

... numerically?

# Urban morphometrics

“quantitative analysis of urban form”

All about measuring.

# Measuring

dimension

shape

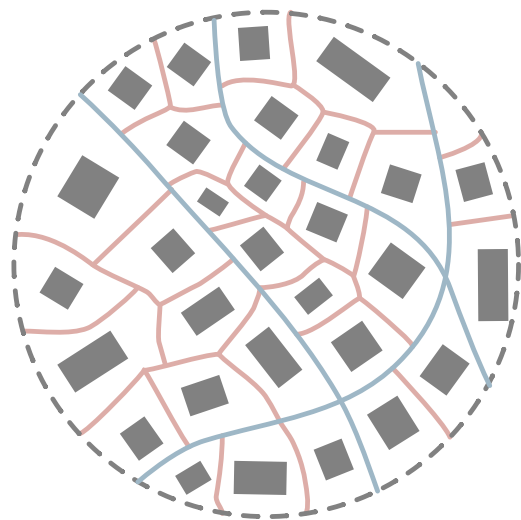
spatial  
distribution

intensity

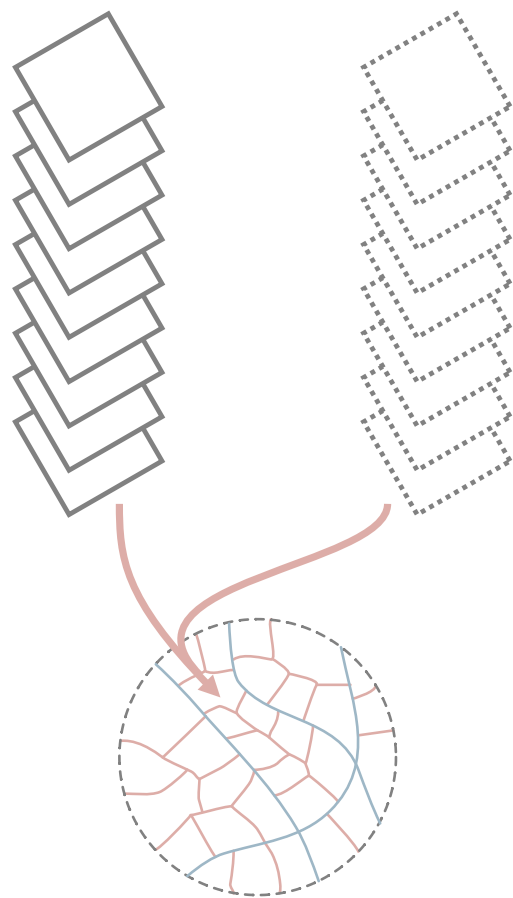
connectivity

diversity

Enclosed  
Tessellation



Embedding  
*measurements*

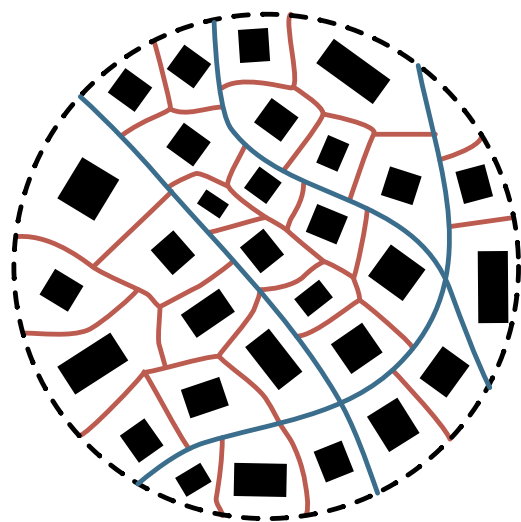


Clustering

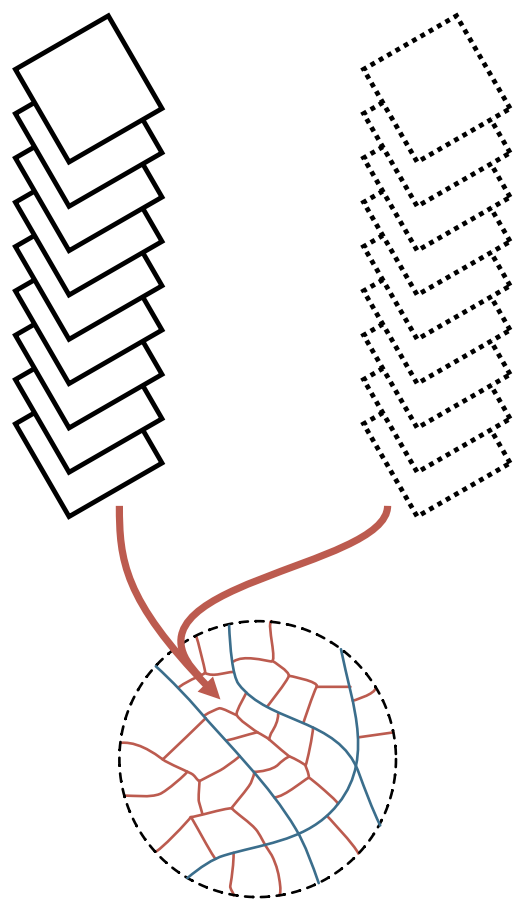
# Context

Every piece of information is considered within its  
spatial context

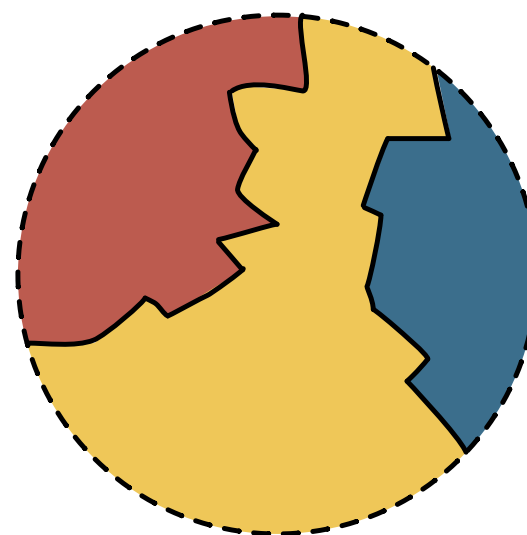
# Enclosed Tessellation



# Embedding *measurements*



# Clustering





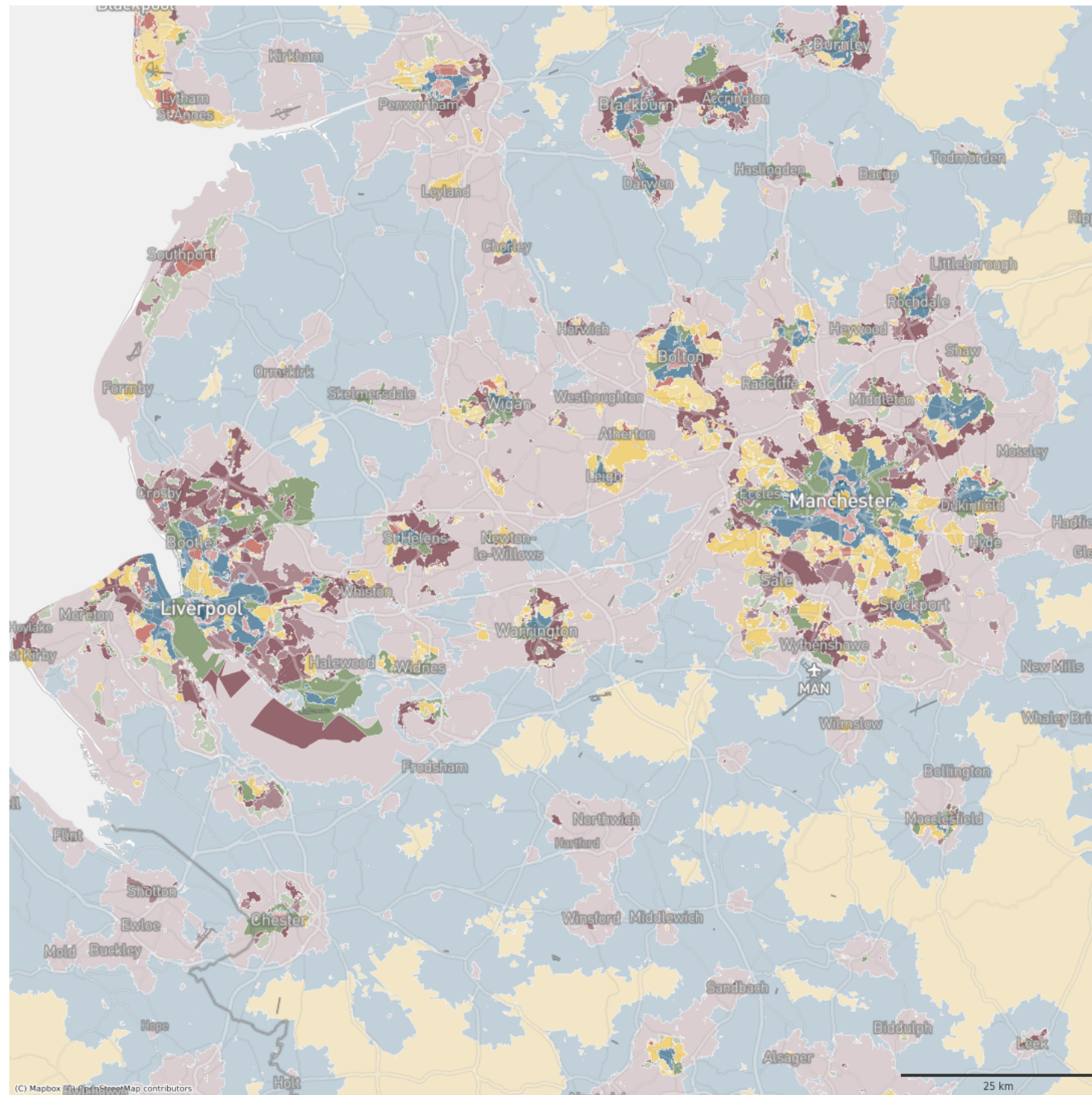
# Results

# 19 classes in 3 main groups

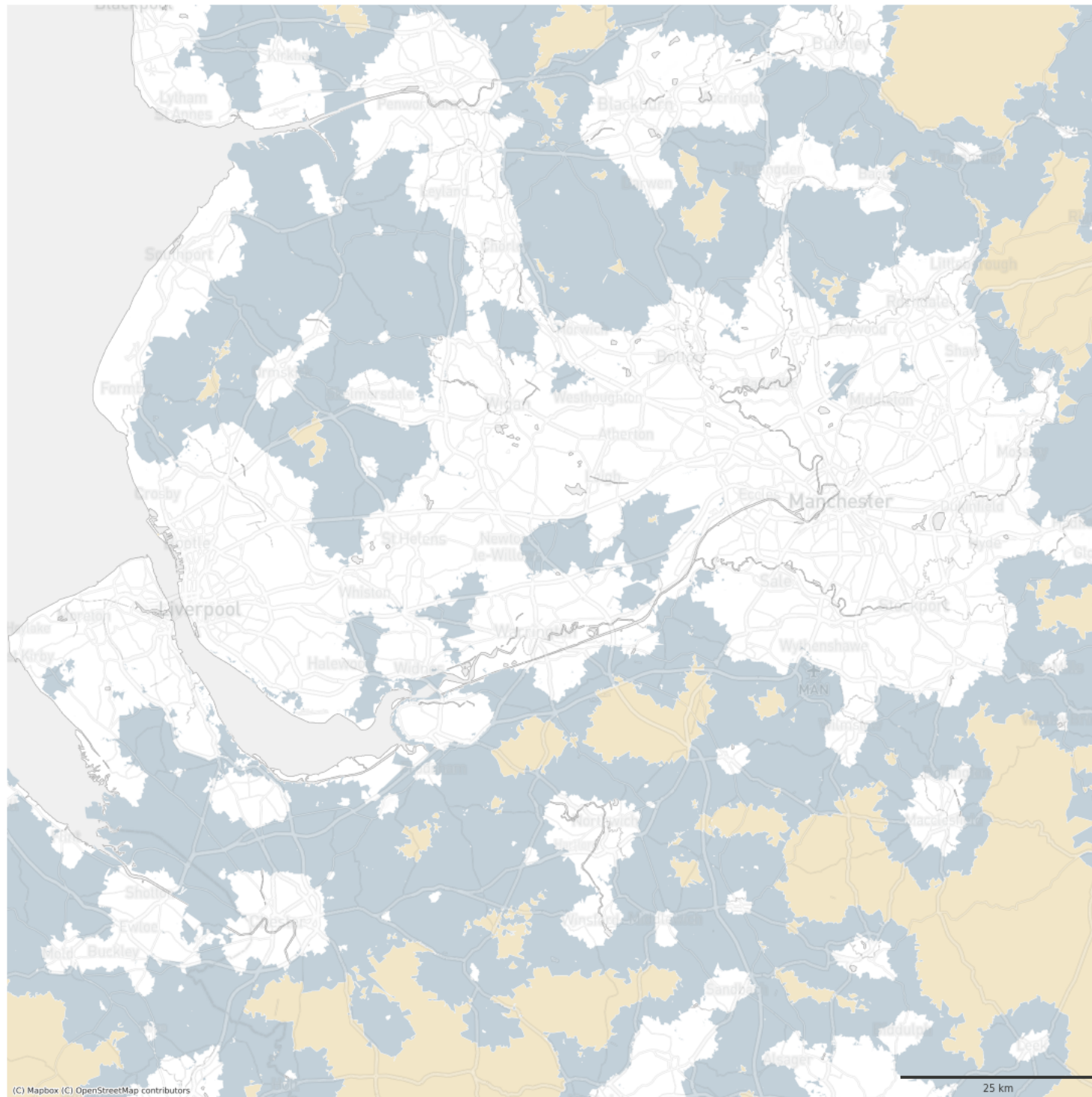
countryside

low density  
development

dense city  
centres

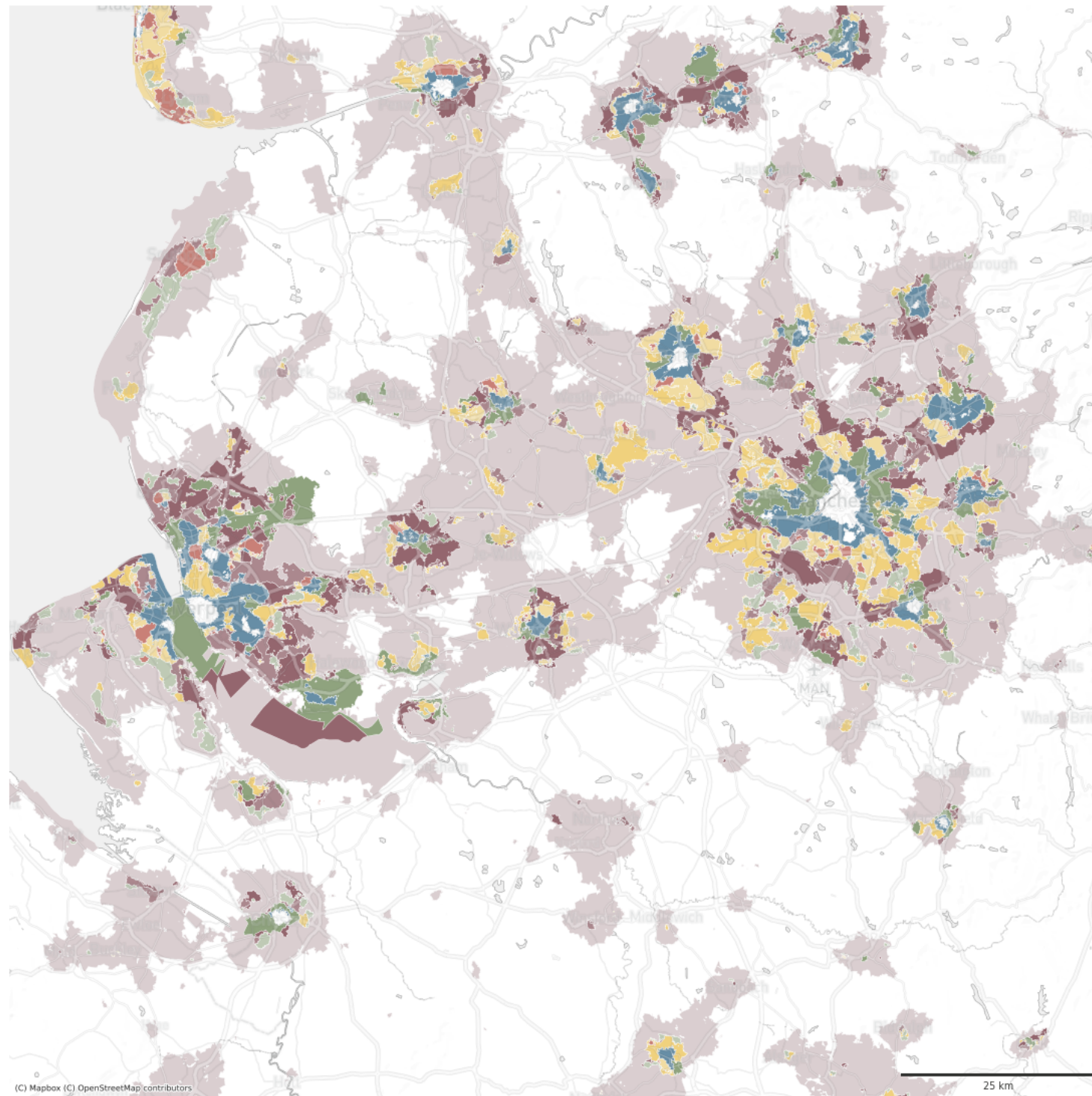


Liverpool - Manchester

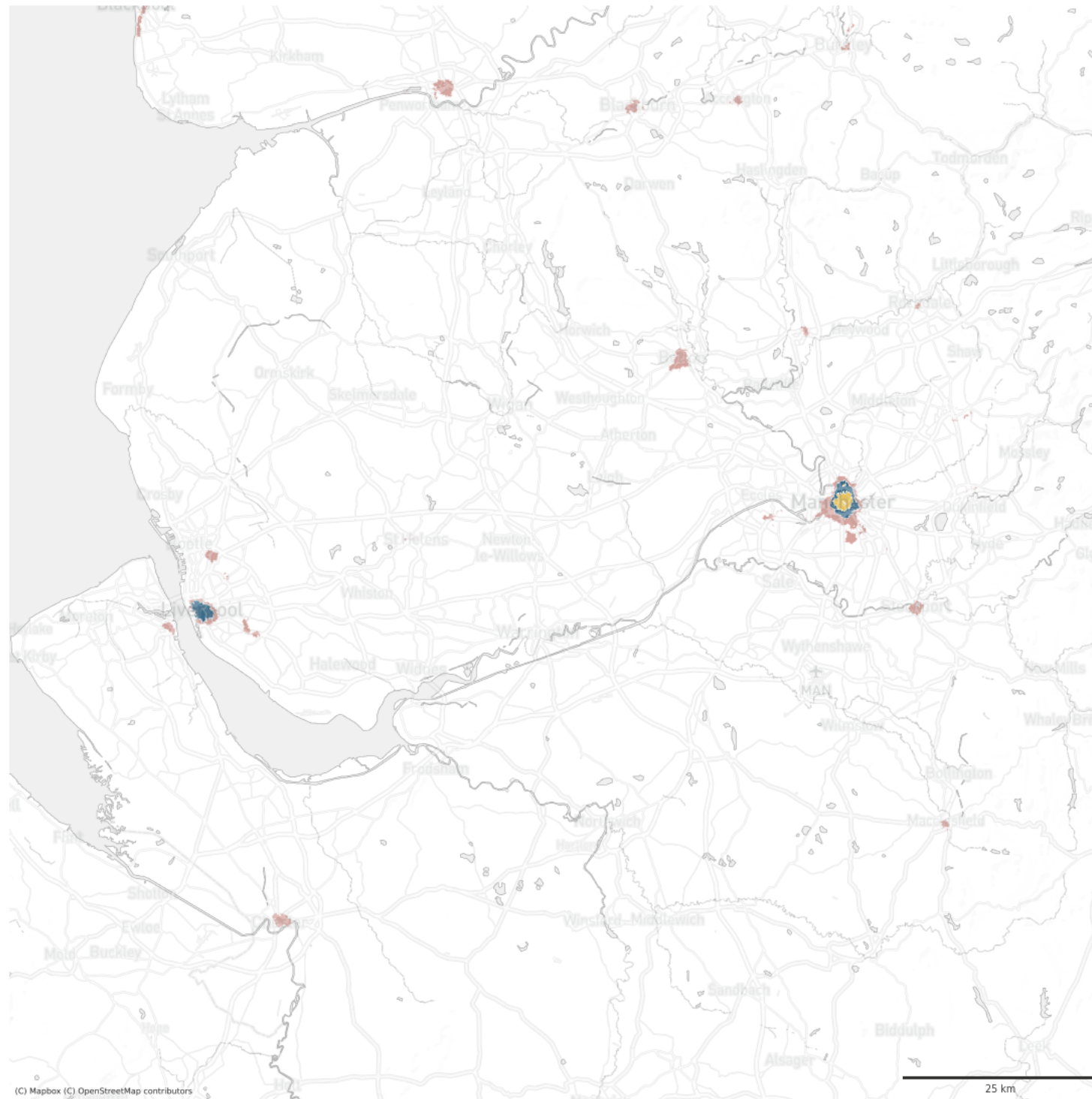


Liverpool – Manchester





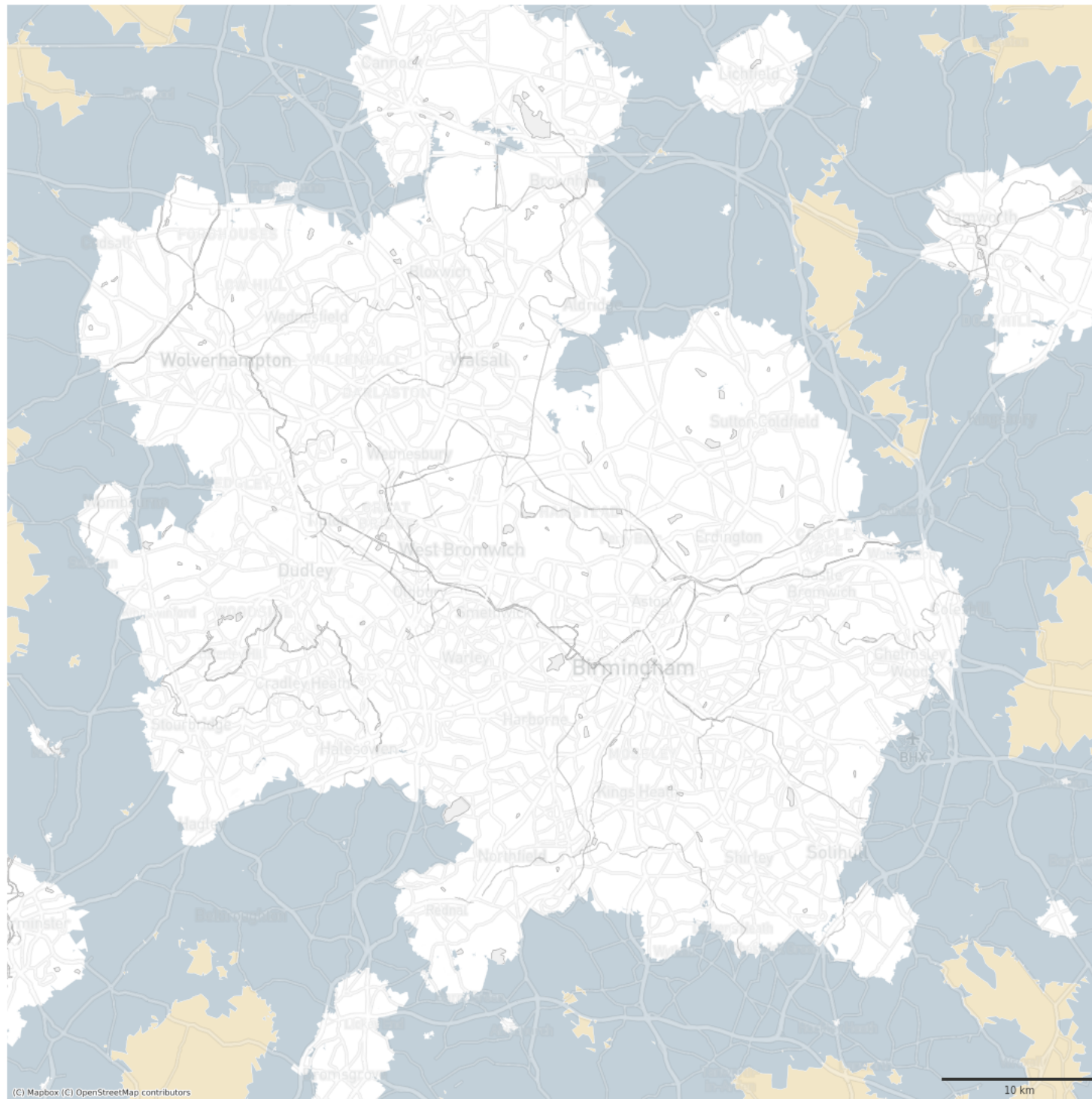
Liverpool - Manchester



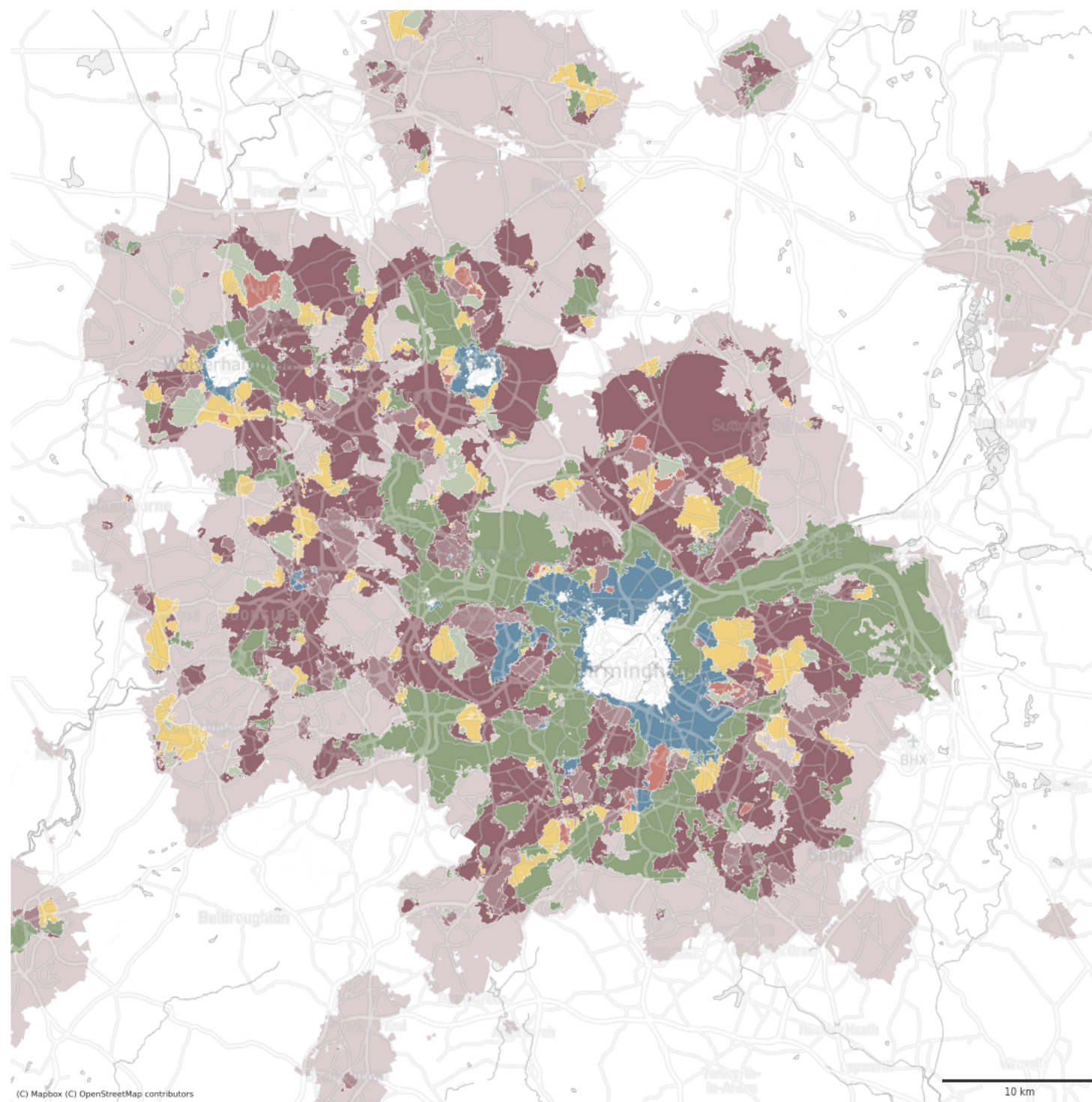
Liverpool – Manchester

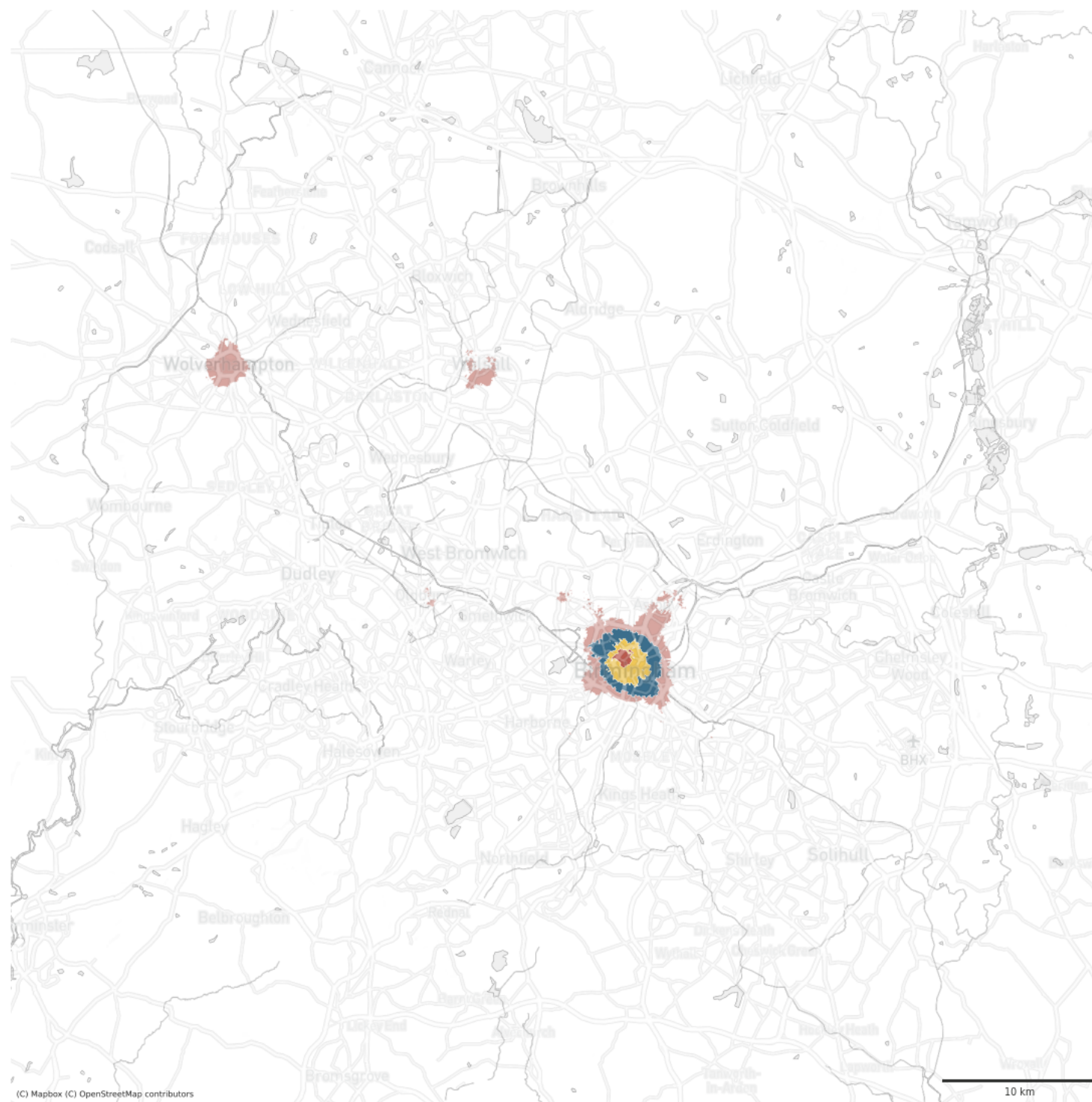




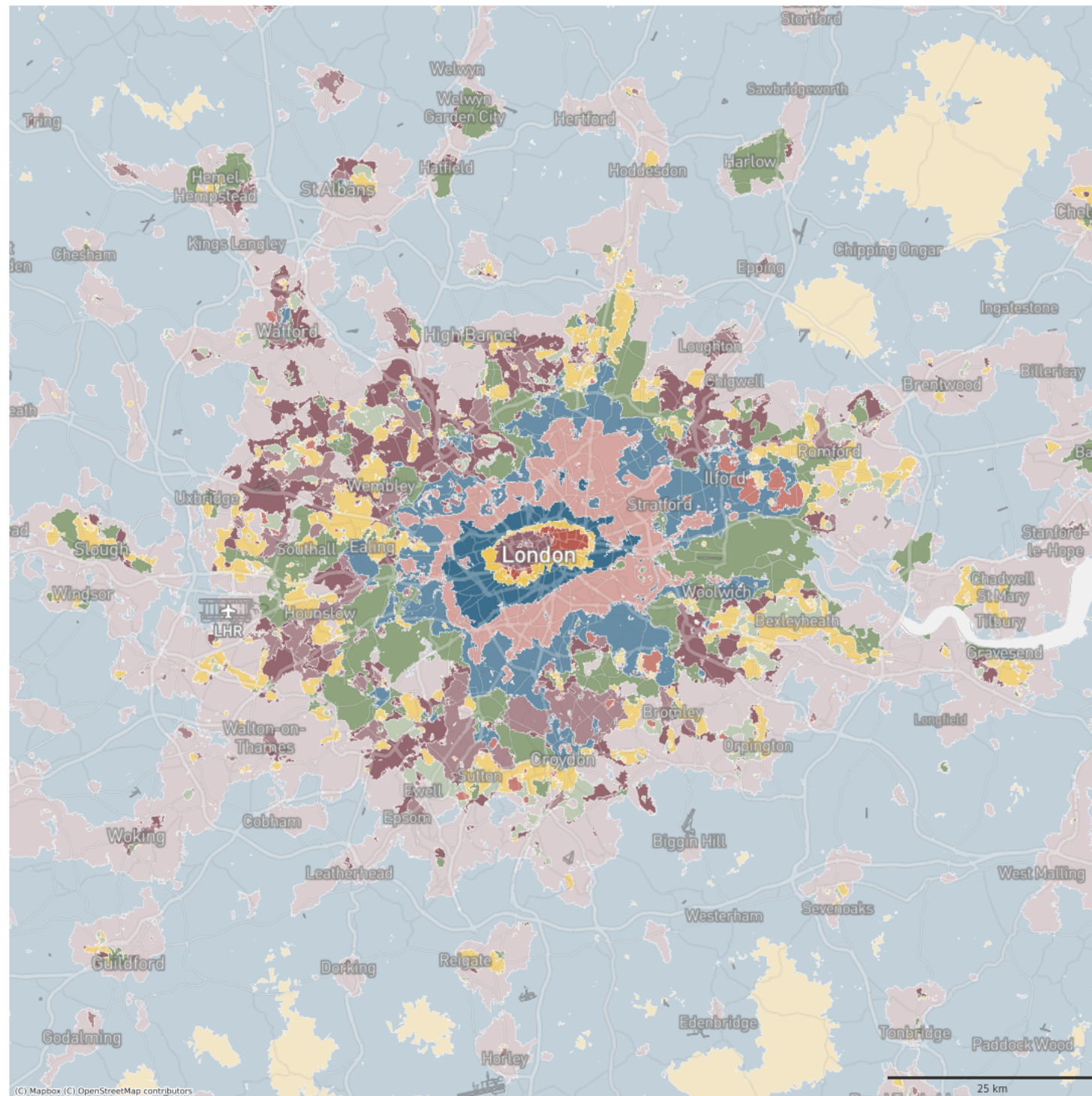










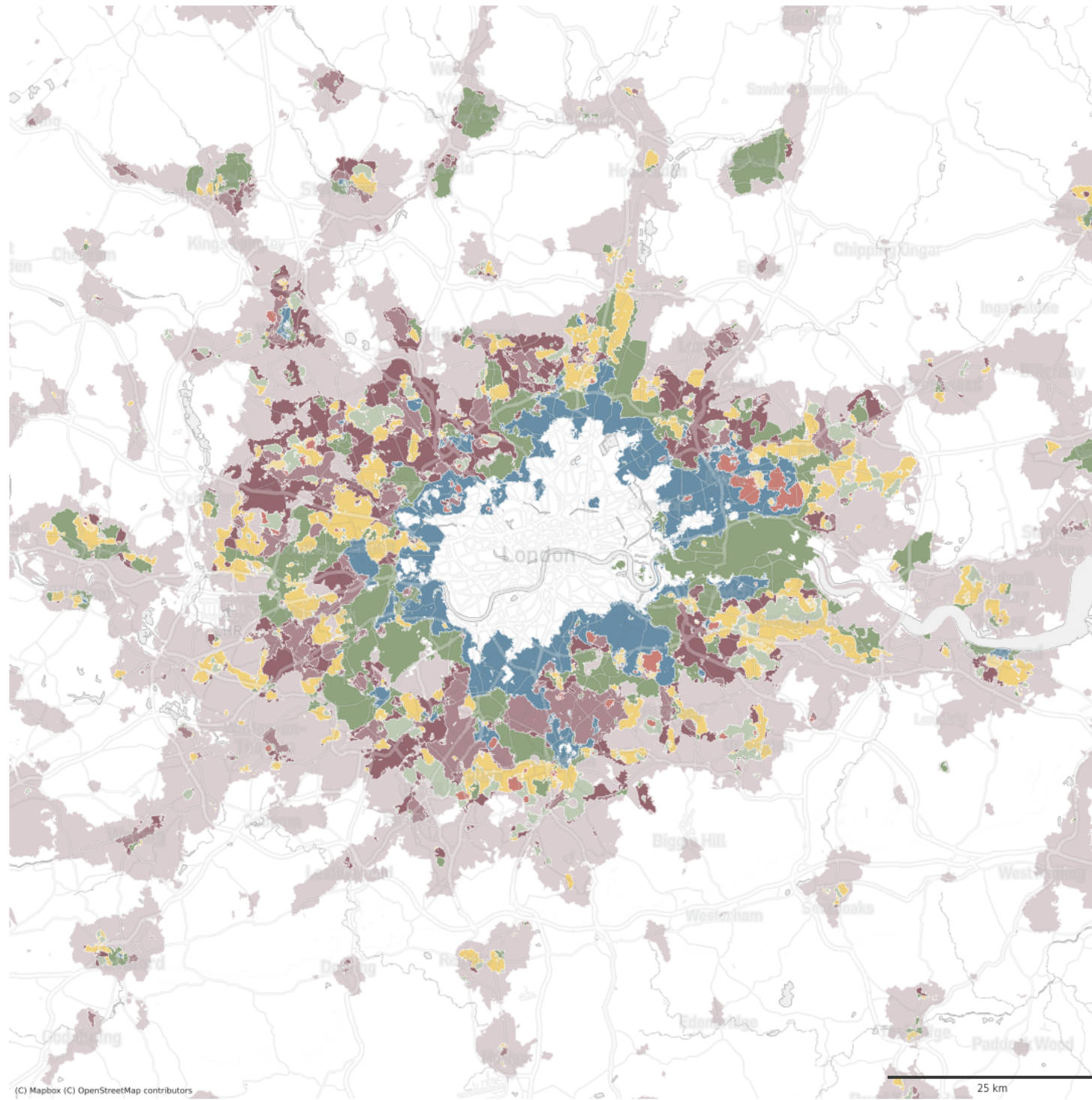


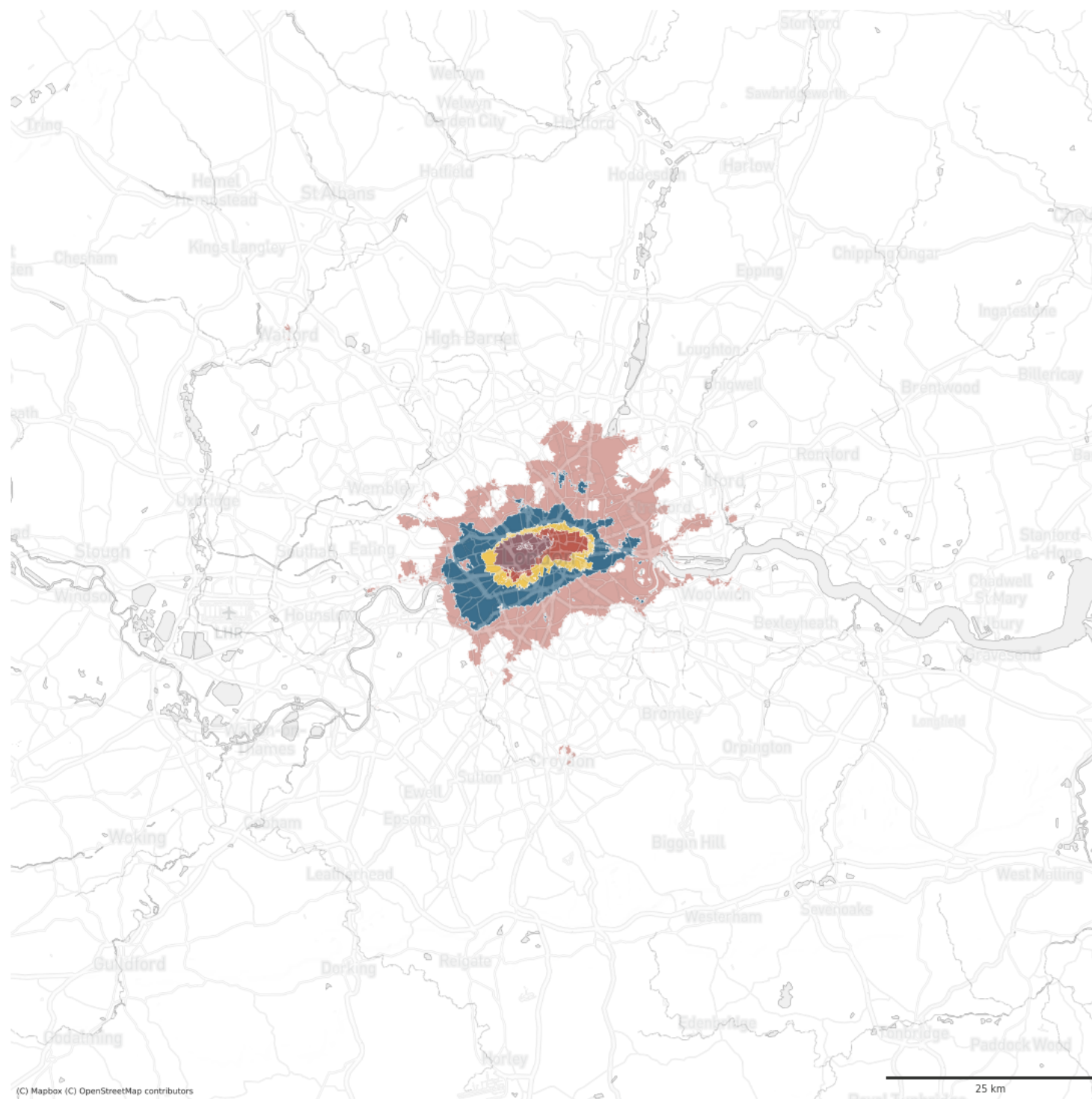
London



London

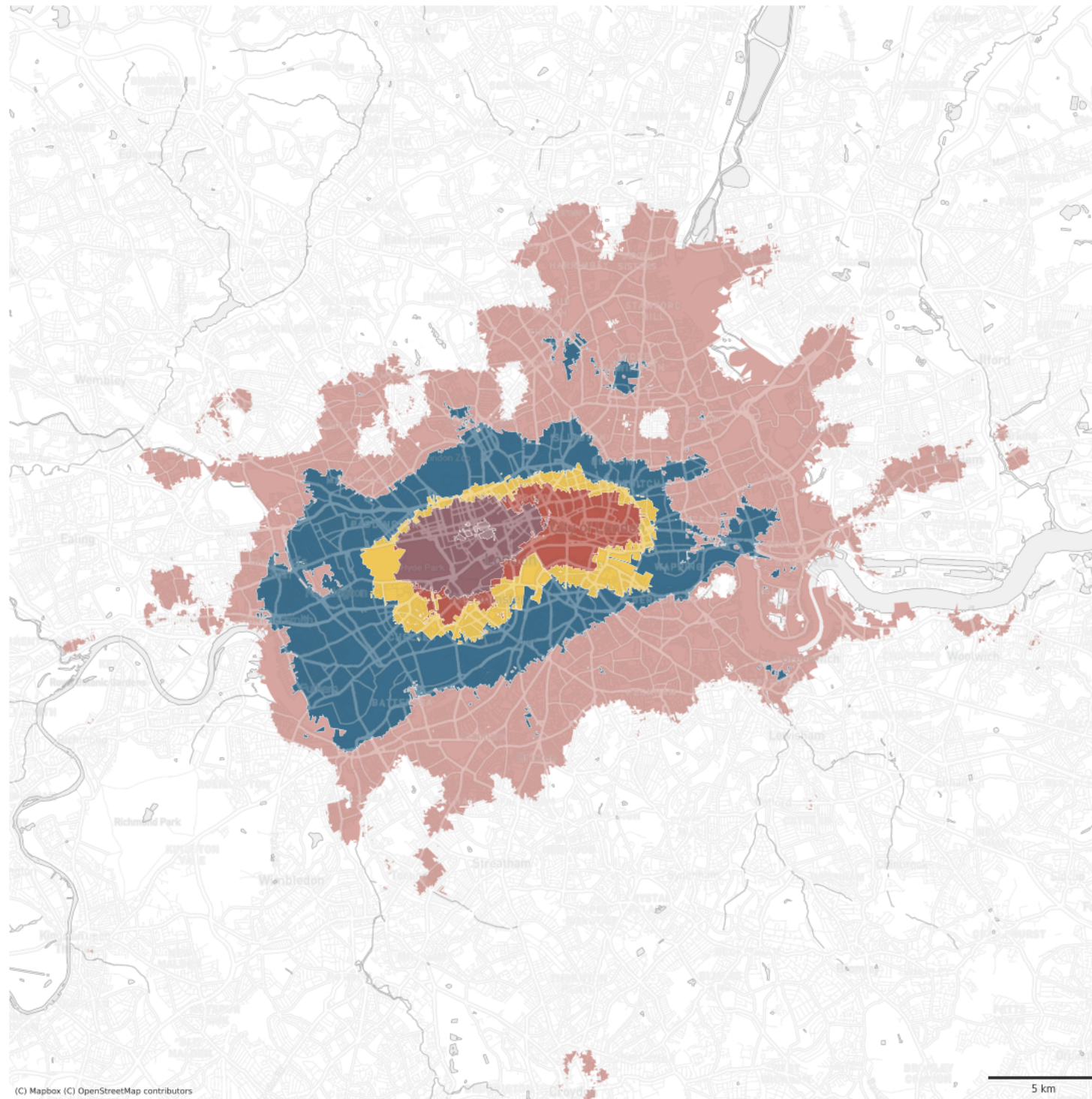


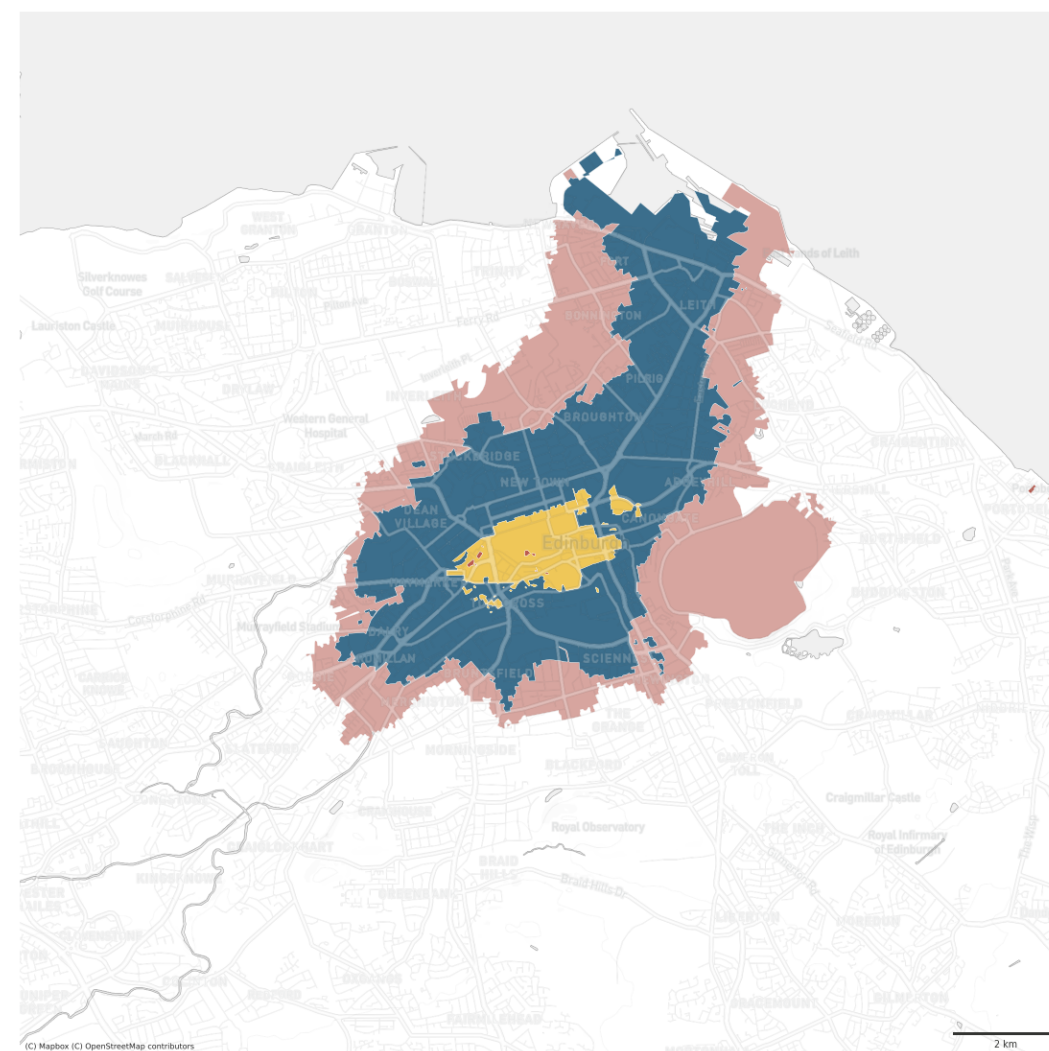
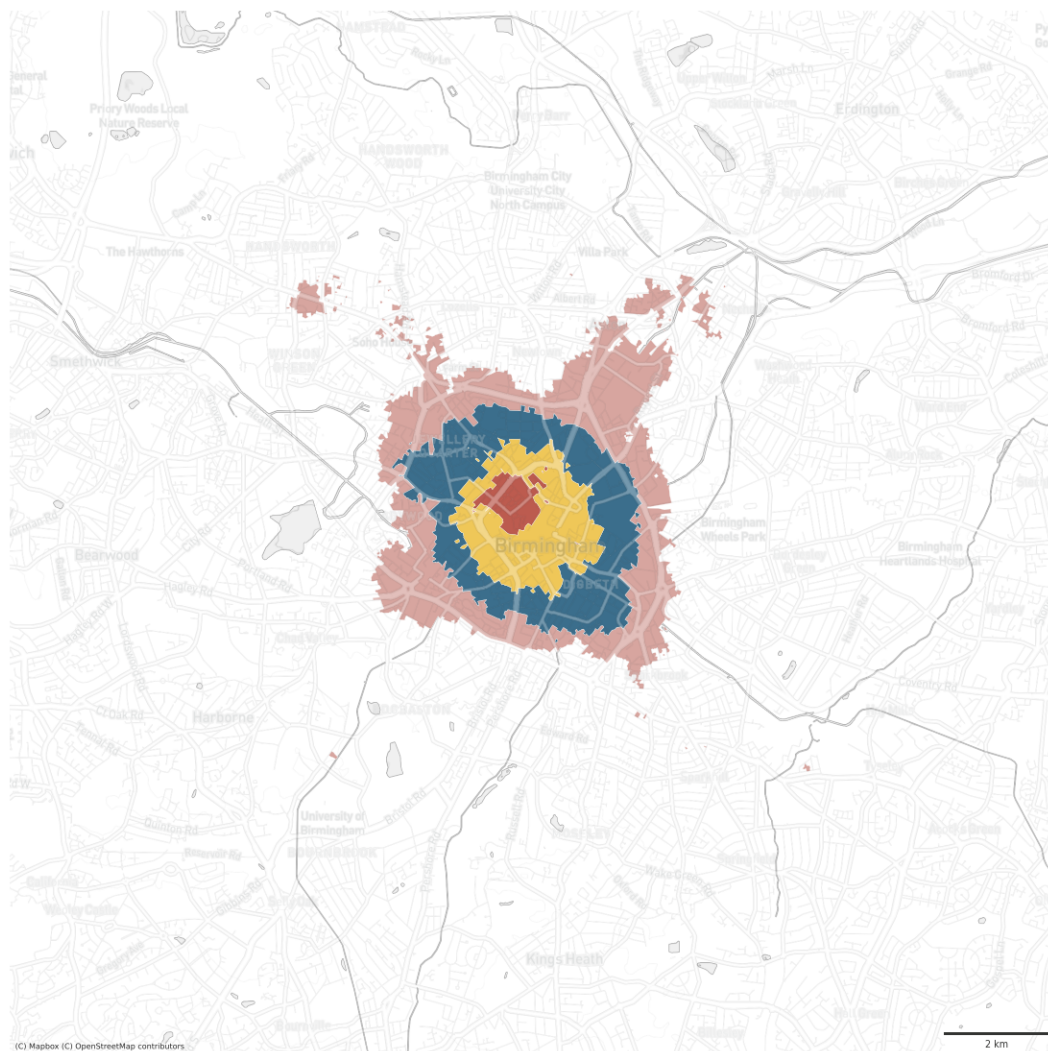




# Concentric character of British centers and centre hierarchy

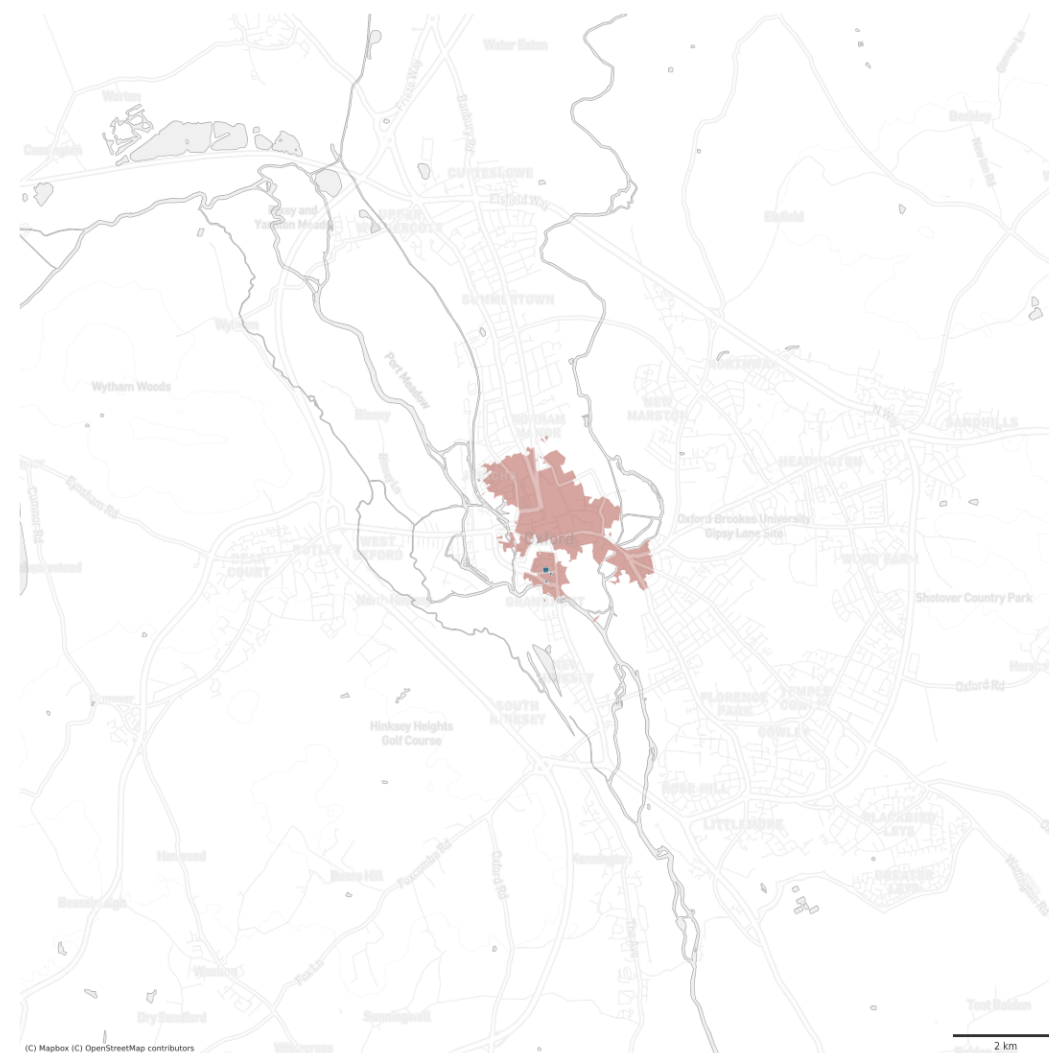
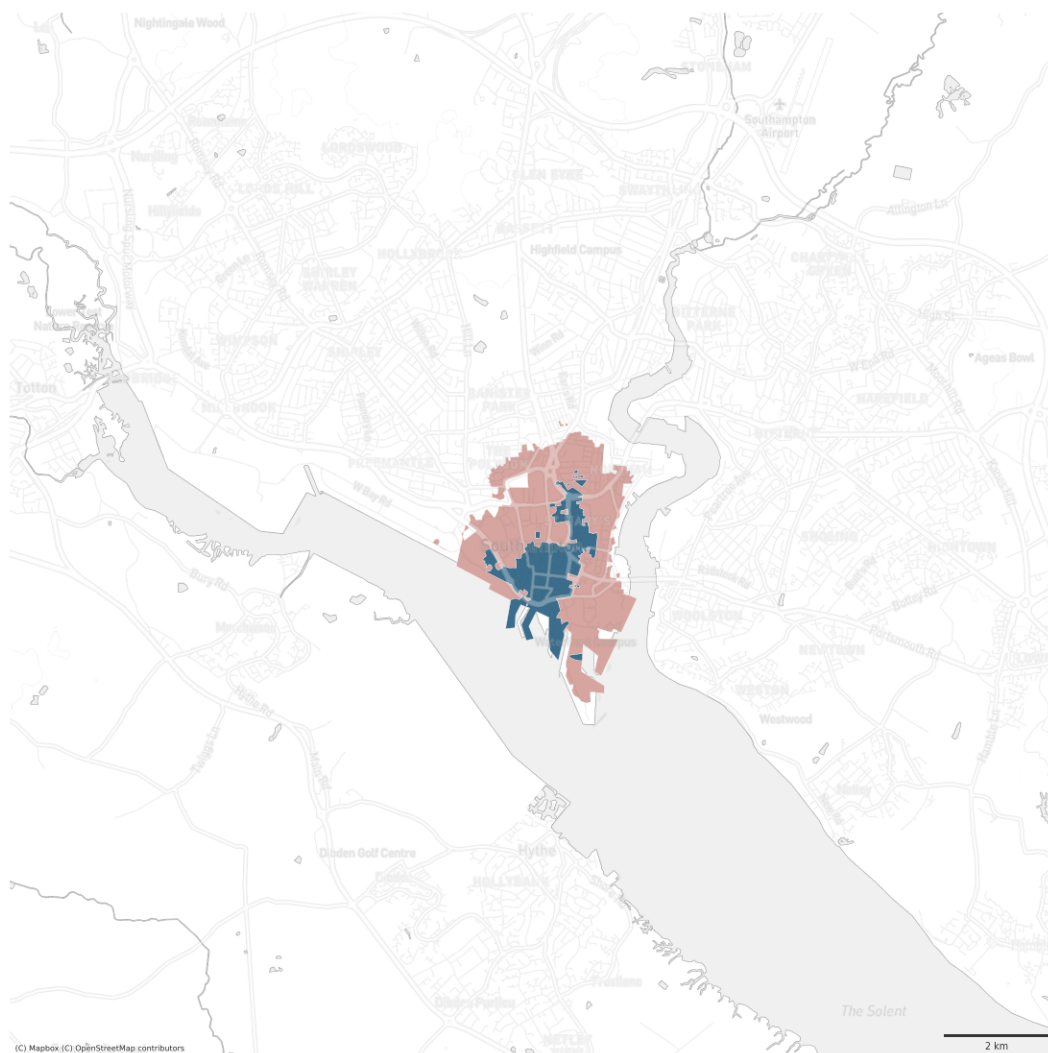






Birmingham, Edinburgh



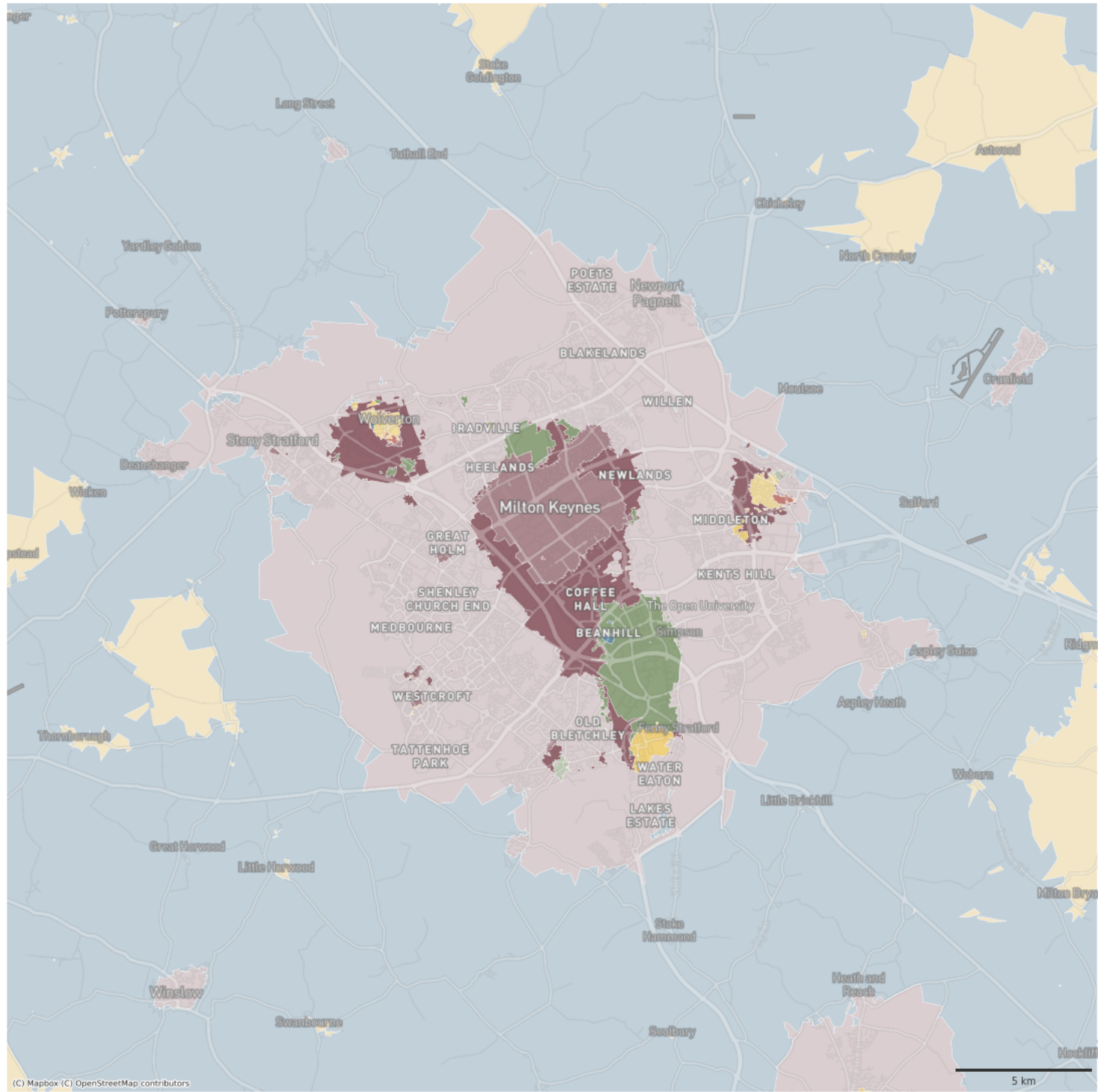


Southampton, Oxford



# Milton Keynes

... does not have a (morphological) centre



# To take away

1. Urban morphology can be scaled
2. Form component of Spatial Signatures:  
classification of urban form in detail, at scale
3. Good measurement → better understanding

# *Classifying urban form at a national scale*

*The case of Great Britain*

Martin Fleischmann

Dani Arribas-Bel

[[@martinfleis](#)]

[[@darribas](#)]



**The  
Alan Turing  
Institute**



Geographic  
Data Science  
Lab