

Spatial Signatures

*Understanding (urban) spaces
through form and function*

Dani Arribas-Bel

Martin Fleischmann

[@darribas]

[@martinfleis]



UNIVERSITY OF
LIVERPOOL

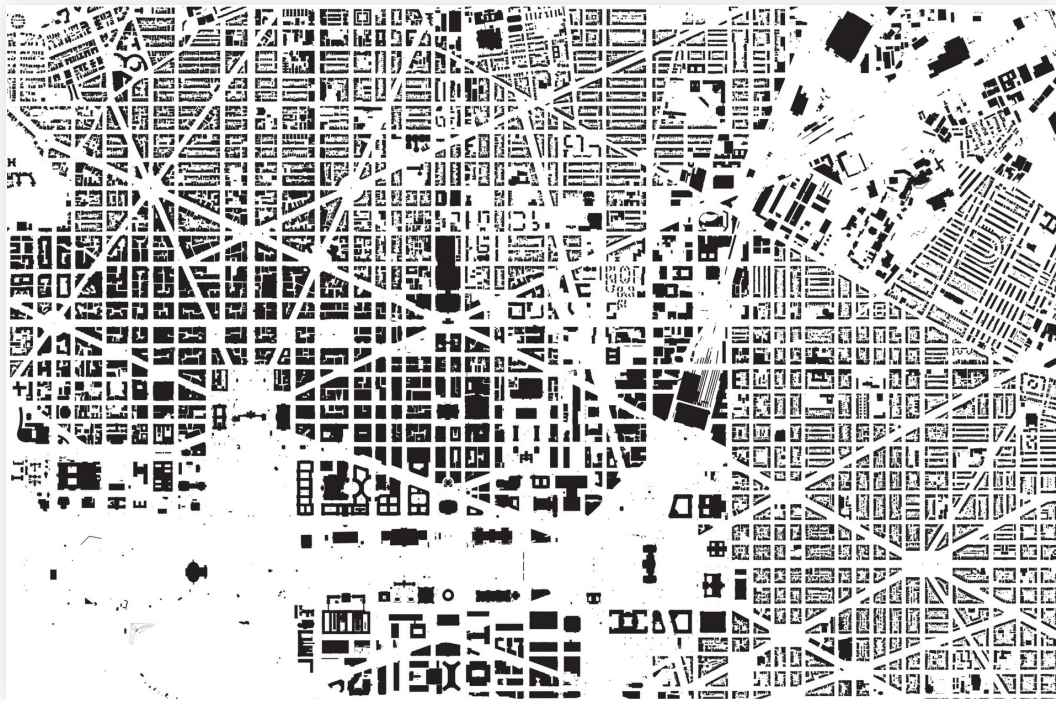
**The
Alan Turing
Institute**



Geographic
Data Science
Lab

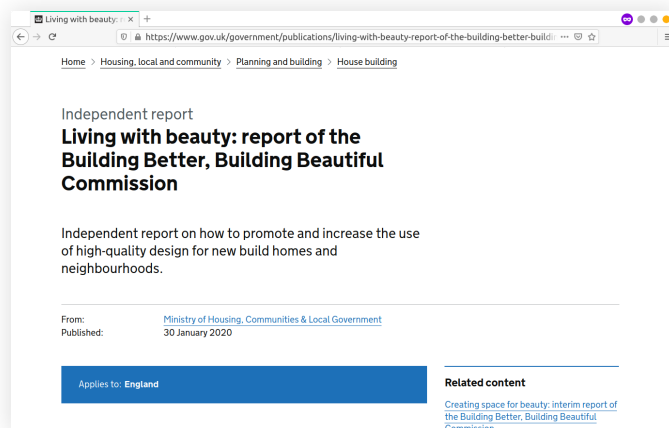
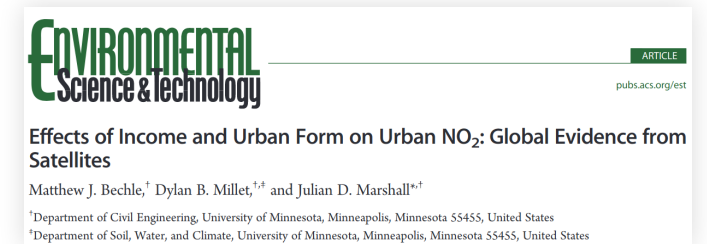
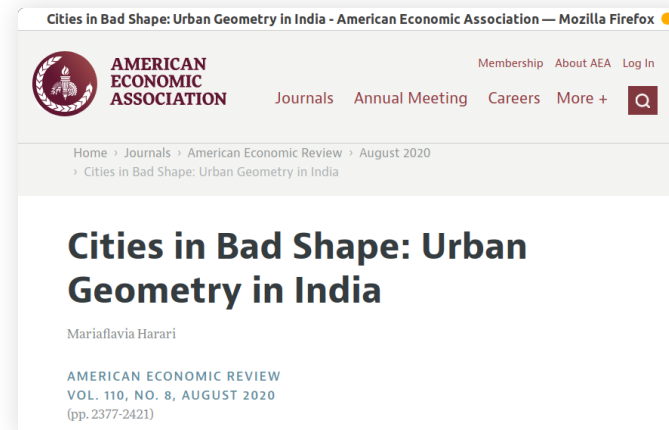
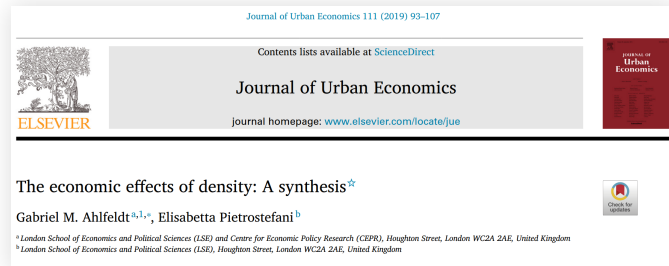
“The point”

How we arrange “stuff” in cities matters...



Source: *A map of every building in America* (New York Times)

... it matters *a lot*



Form

What does it look like?

“Physical structure and appearance of cities”

Qualitative, quant. case studies, morphometrics,
remotely sensed

Function

What is it used for?

“Activities that take place within an environment”

Geography, Economics, Sociology, Environmental Sciences, Transport studies...

Form & Function

- Richer picture
- Topography, history, technology, cultural values...
- More robust representations

Opportunities

We don't have good ways of measuring form & function in cities

- Detailed, consistent, scalable: “pick two”
- Fragmented understanding
- Land use/cover – ??? – Geodemographics

Spatial Signatures

*A characterisation of space based on form and function
designed to understand urban environments*

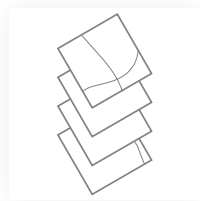
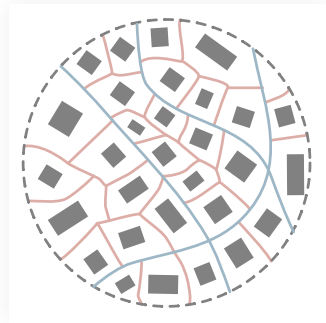
*A characterisation of space based on form and function
designed to understand urban environments*

*A characterisation of space based on form and function
designed to understand urban environments*

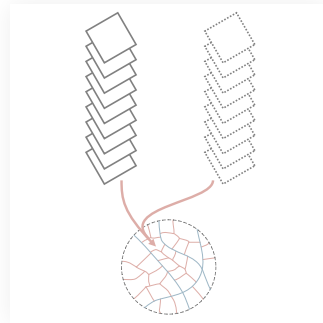
*A characterisation of space based on form and function
designed to understand urban environments*

[STAGE] Barriers Enclosure Morph. Tess. Encl. Tess. Characters Clusters Signatures

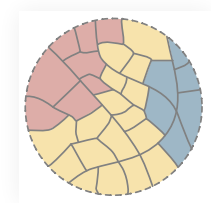
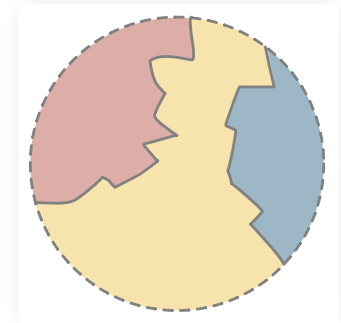
Enclosed Tessellation



Embedding *form & function*

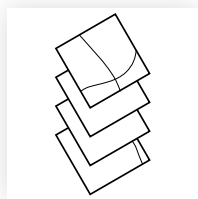
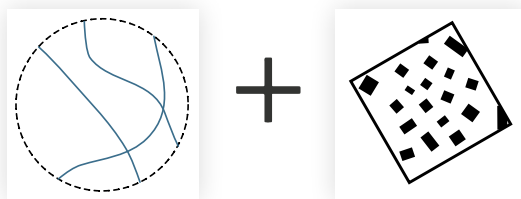
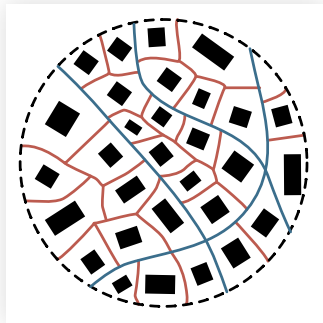


Spatial Signatures

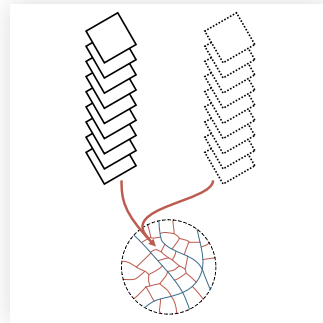


[STAGE] Barriers Enclosure Morph. Tess. Encl. Tess. Characters Clusters Signatures

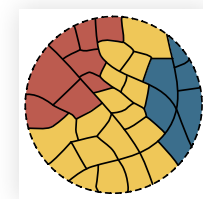
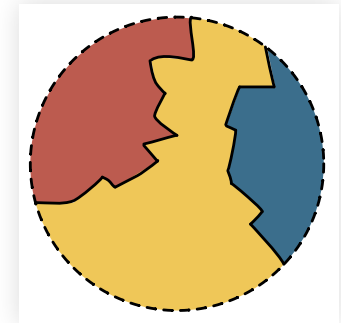
Enclosed Tessellation



Embedding *form & function*



Spatial Signatures



Characters

Form

- Building
- ET cell
- Street segment
- Cell context

Function

- Land use/cover
- Access to uses
- Activity densities

Benefits

- Data-driven & (multidiscipline) theory-informed
- Granular & scalable
- Flexible deployment

Illustration

The Setup

Five *different* cities

- Historical environments
- Geography & culture
- Data landscapes

The Cities

Barcelona

Dar es
Salaam

Houston

Medellin

Singapore

Spain

Tanzania

USA

Colombia

Singapore

The Data

Form

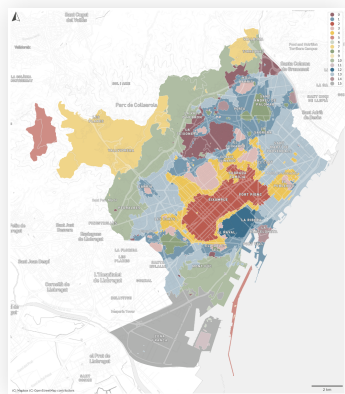
- Local open data
- OpenStreetMap
- Satellite-derived

Function

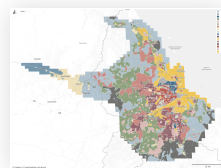
- Local open data
- Land use/cover
- Global grids
- Nightlights

Clustered with K-Means + clustergram

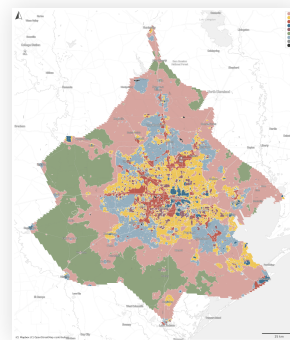
The Signatures



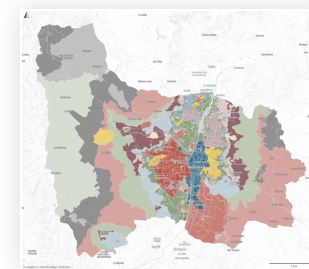
Barcelona



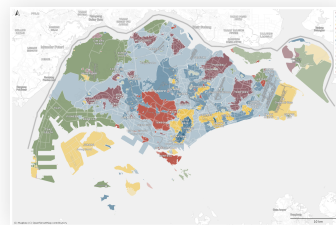
Dar es
Salaam



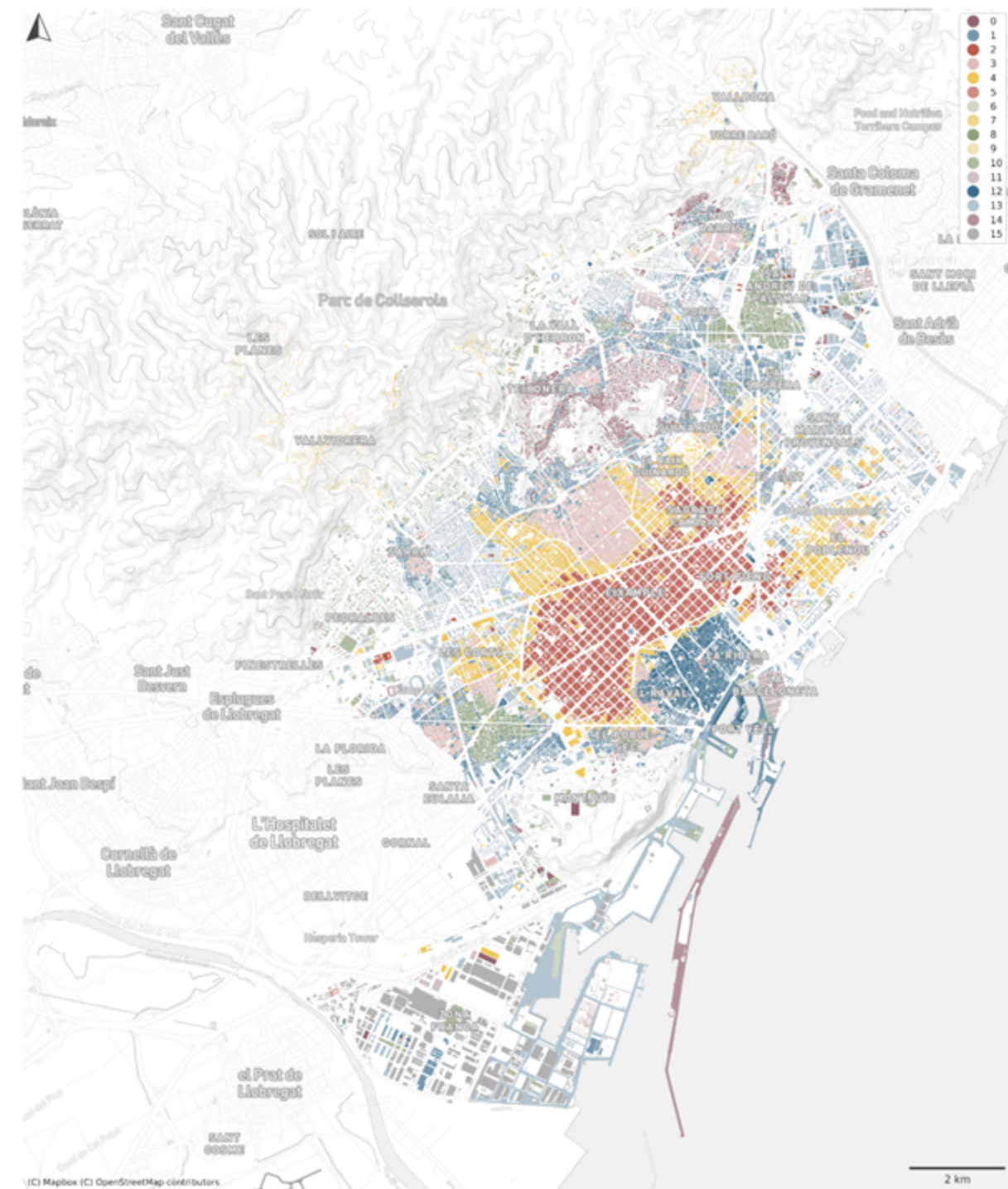
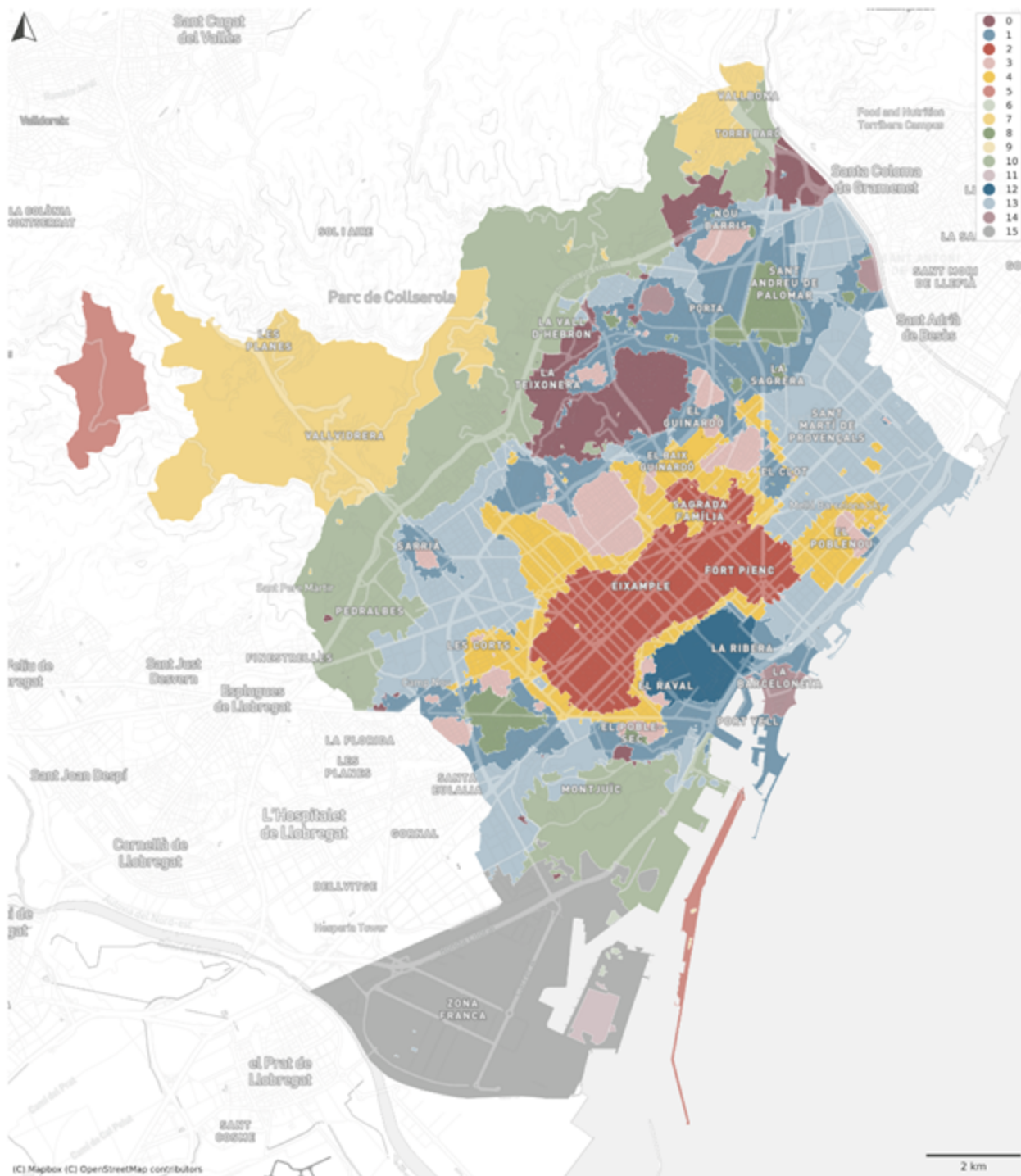
Houston

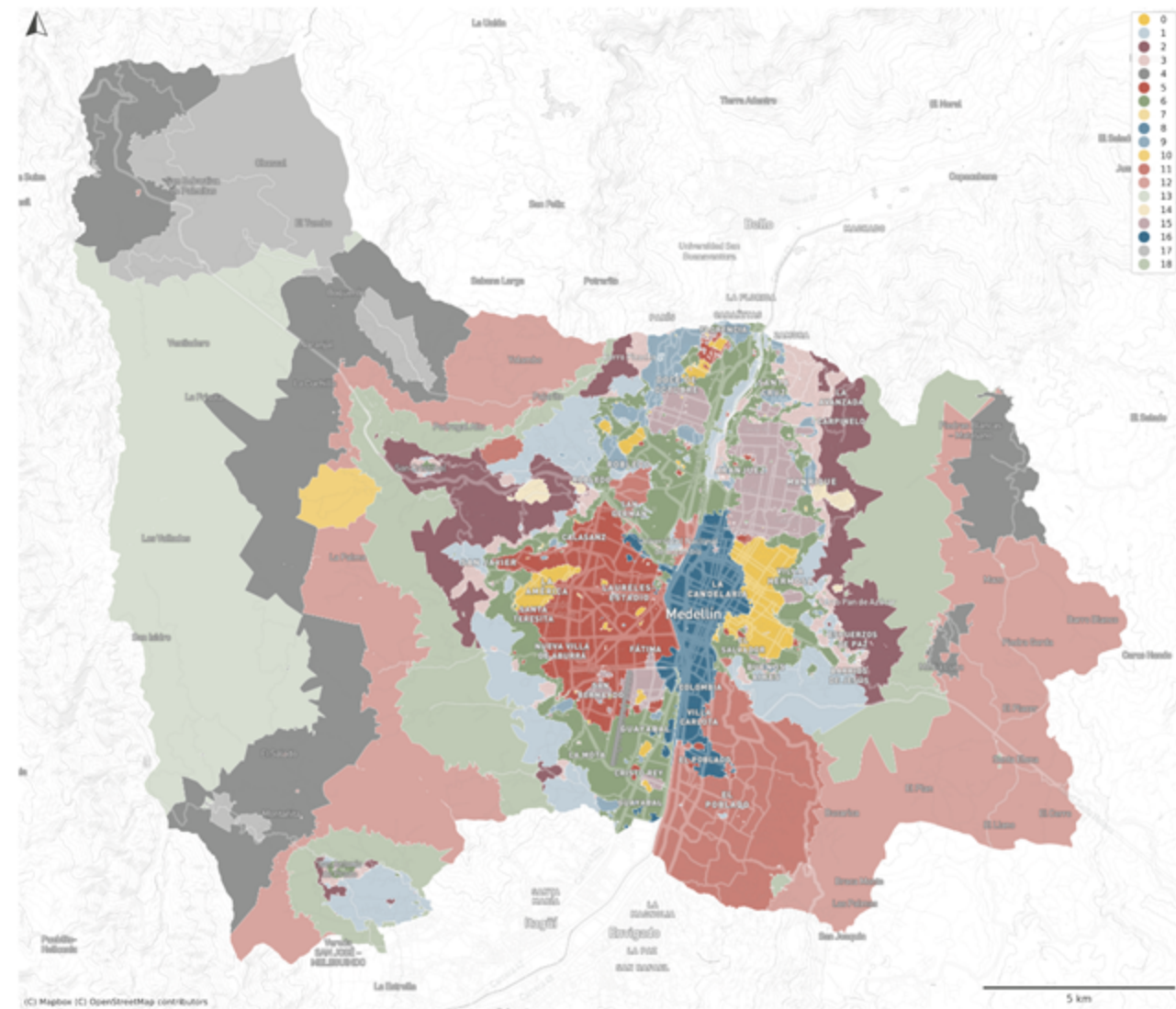
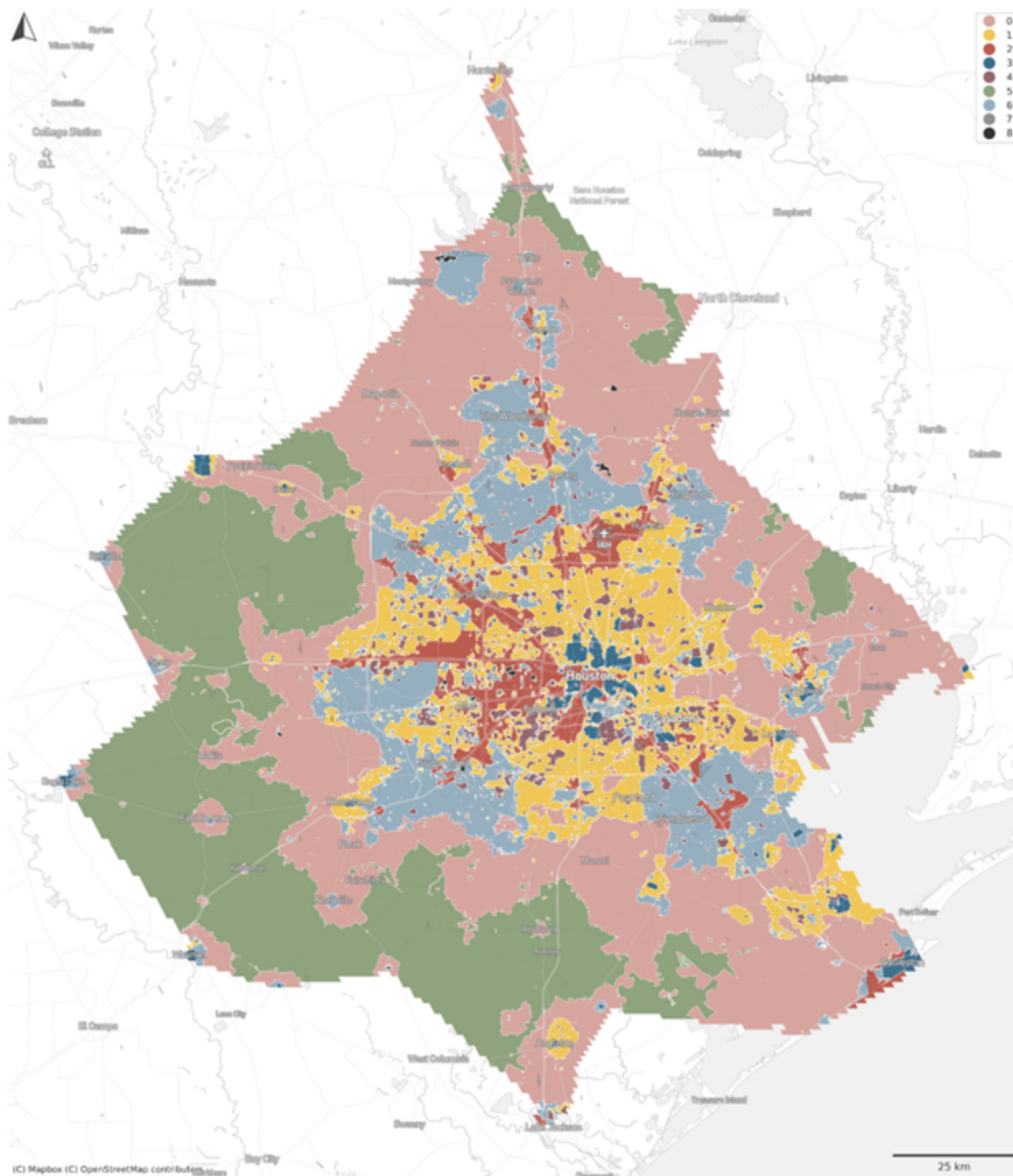


Medellin

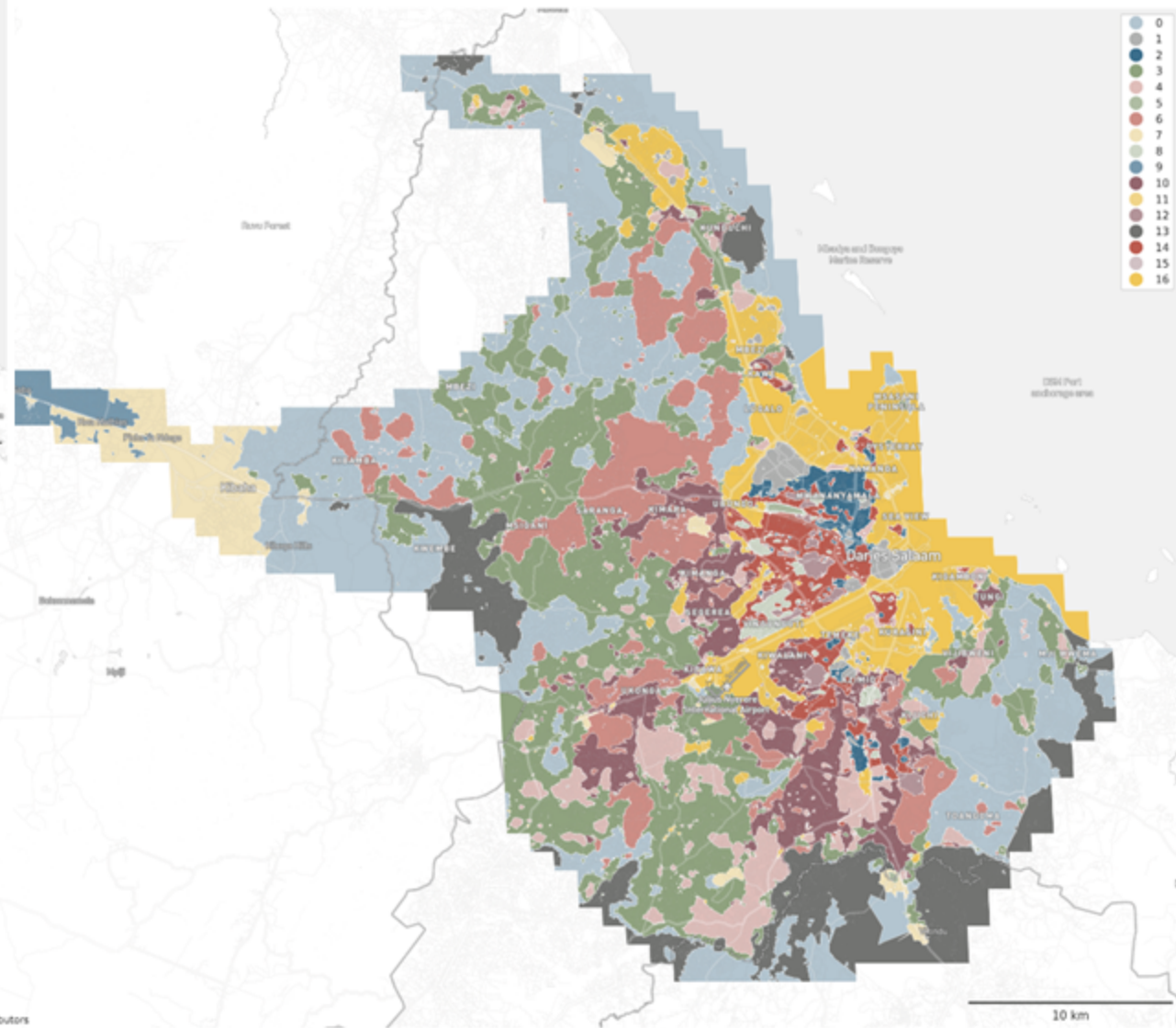
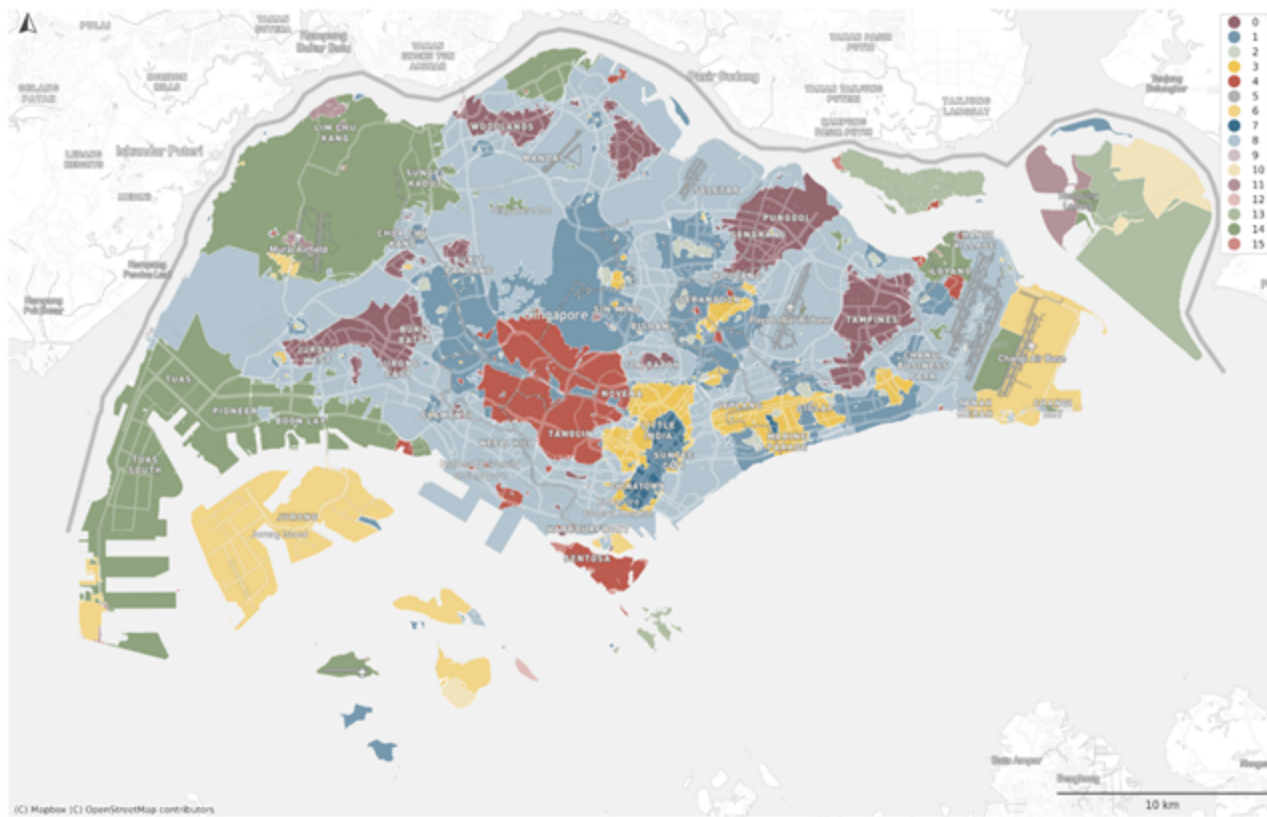


Singapore





Houston | Medellín



To take away

1. Urban *form* and *function* matters
2. Spatial Signatures: F&F for cities, in detail, at scale
3. Good measurement → better understanding

Spatial Signatures

Understanding (urban) spaces
through form and function

Dani Arribas-Bel

Martin Fleischmann

[@darribas]

[@martinfleis]



UNIVERSITY OF
LIVERPOOL

**The
Alan Turing
Institute**



Geographic
Data Science
Lab